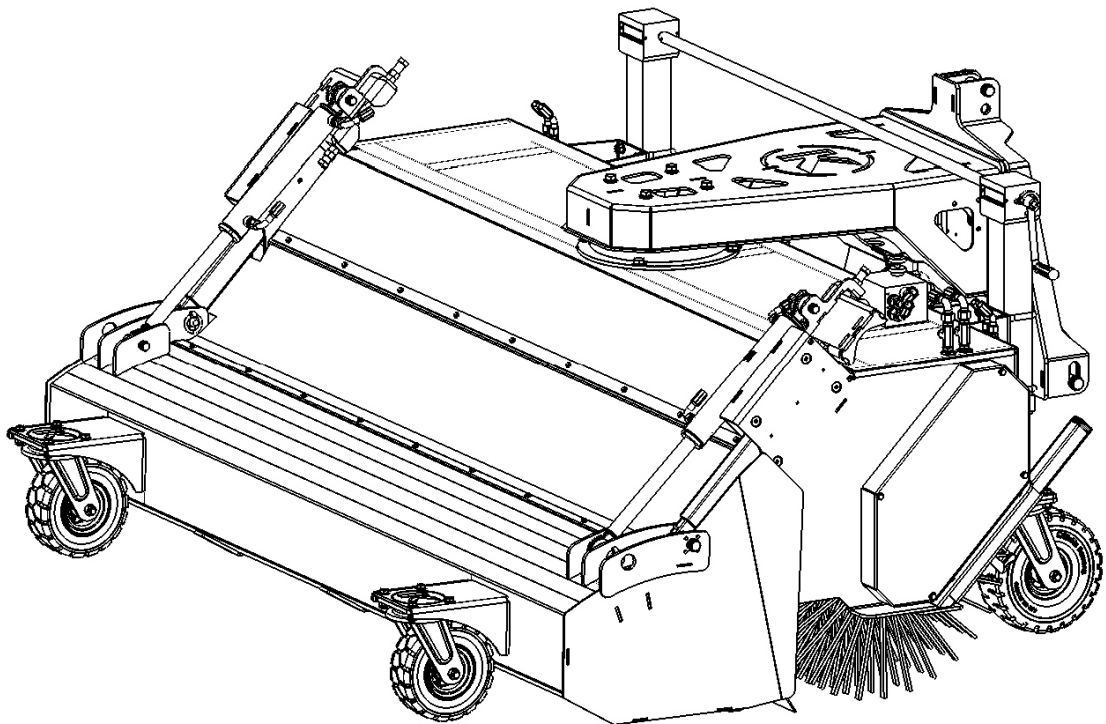




Original – Operating Instructions

Professional Sweeper

KM 25070 H; KM 27070 H; KM 30070 H



Order number: B00072

from Masch- No.:

Rev.: R00

Date: 01.12.2016



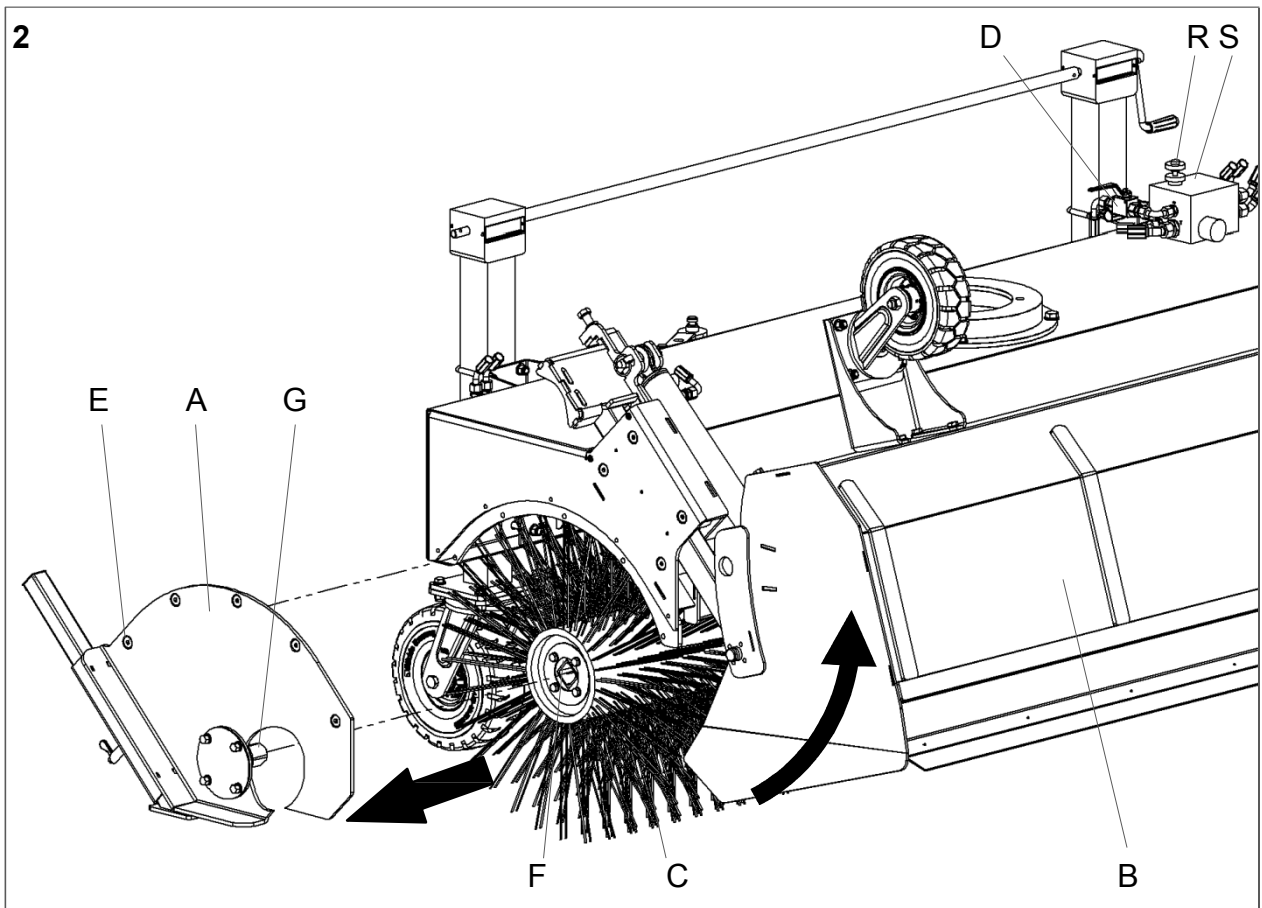
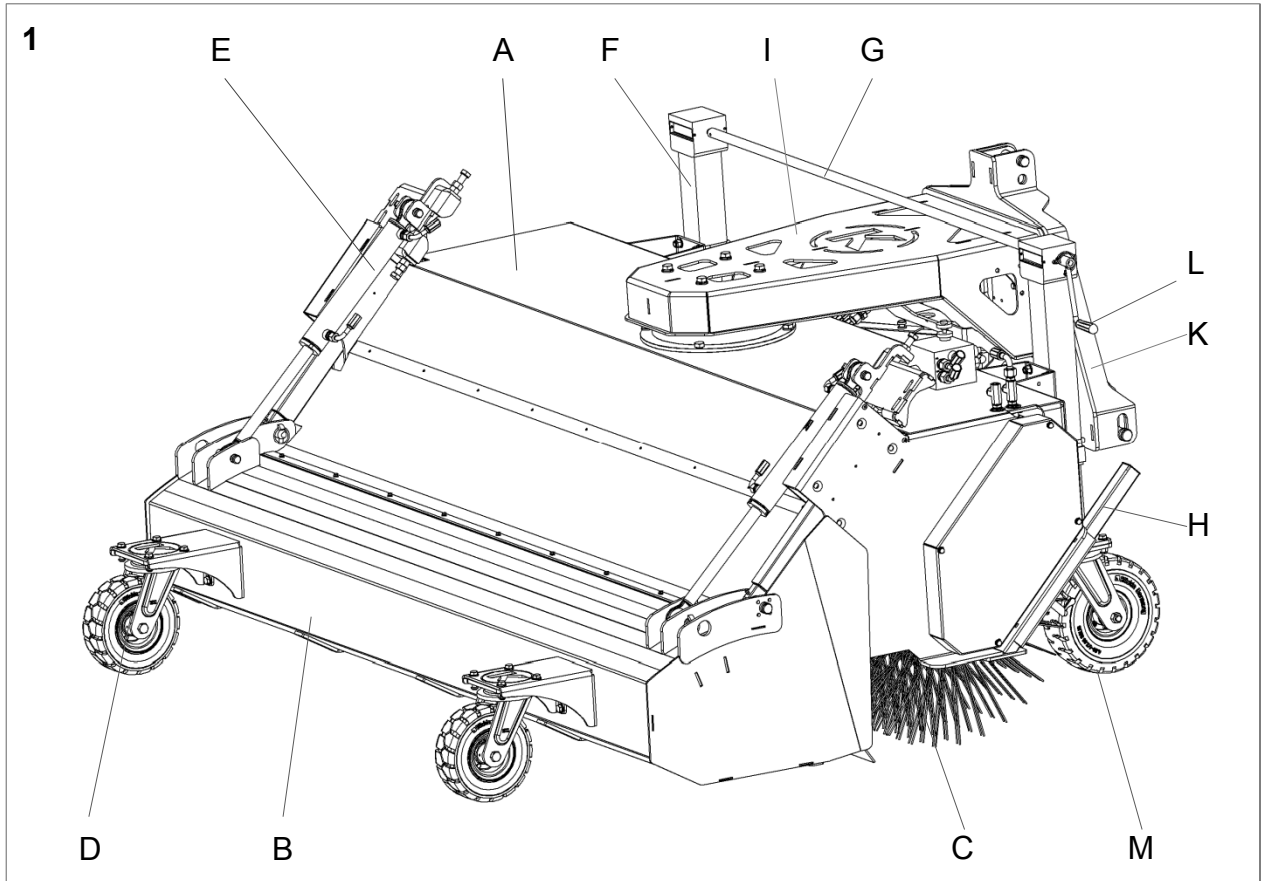
Manufactured by Kersten
Arealmaschinen GmbH
Empeler Straße 95
D - 46459 Rees
www.kersten-maschinen.de

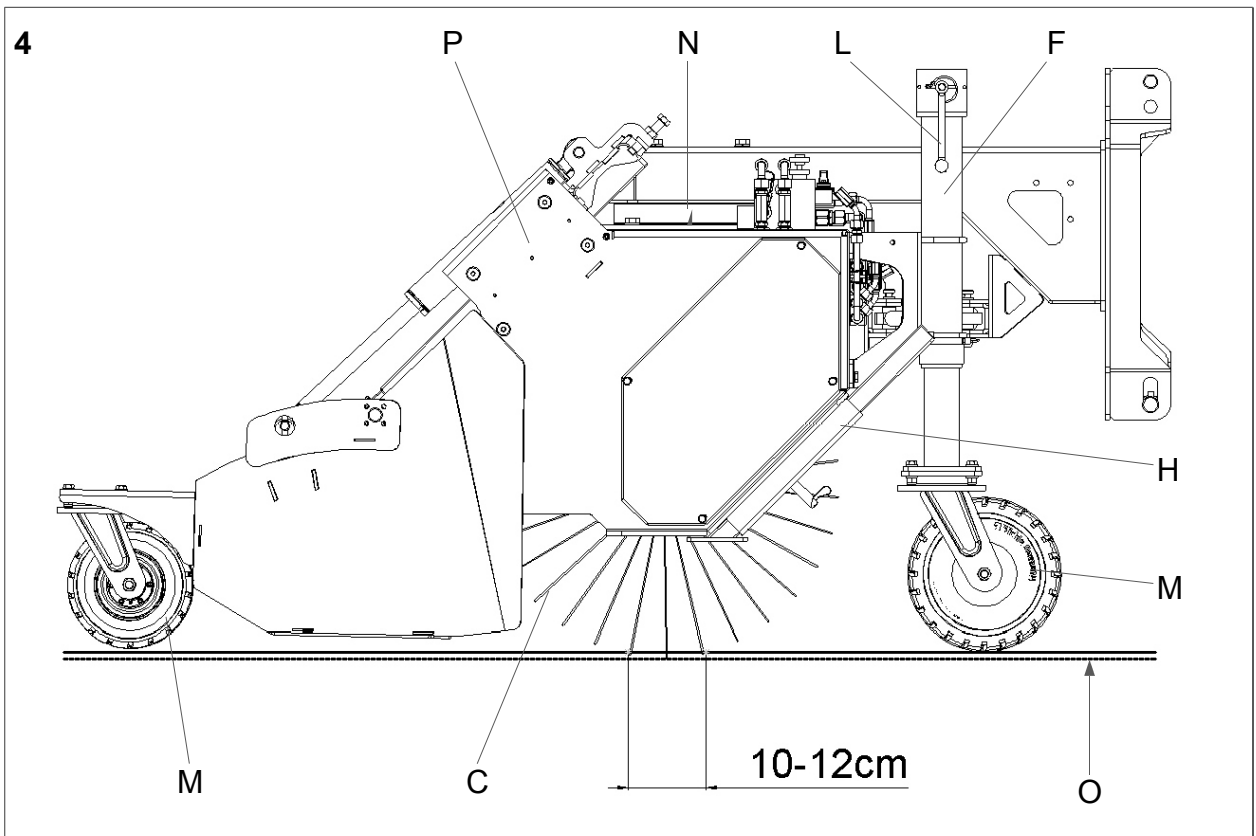
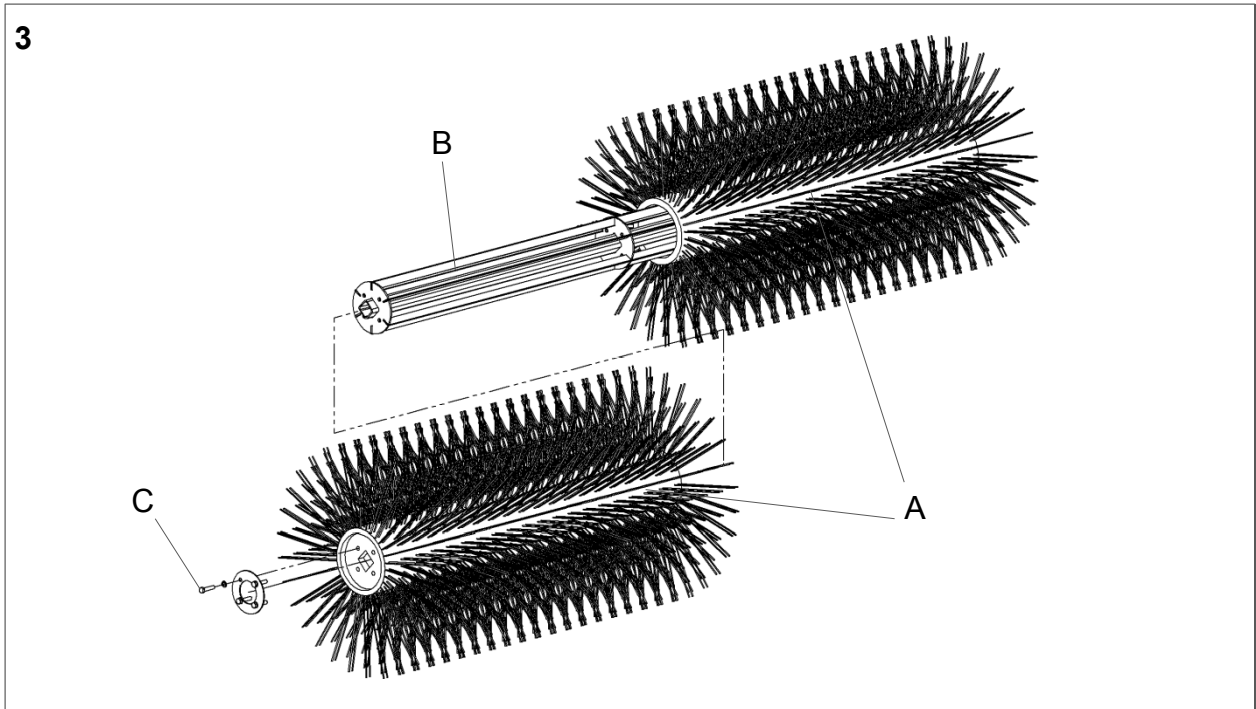


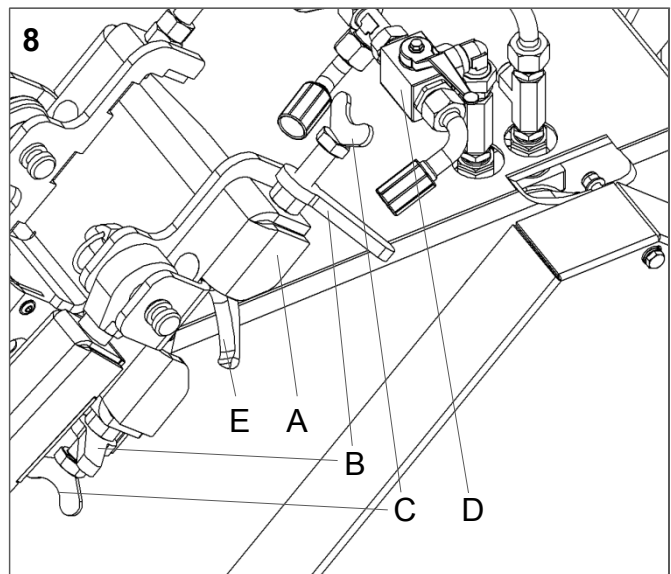
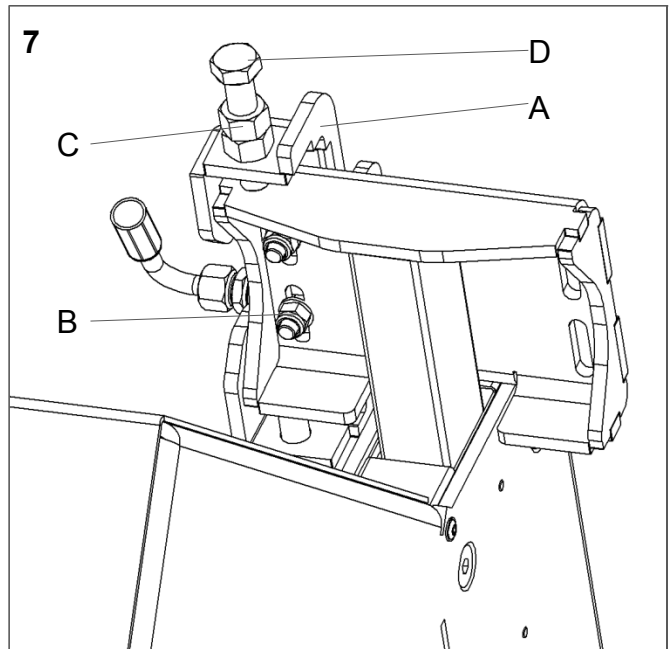
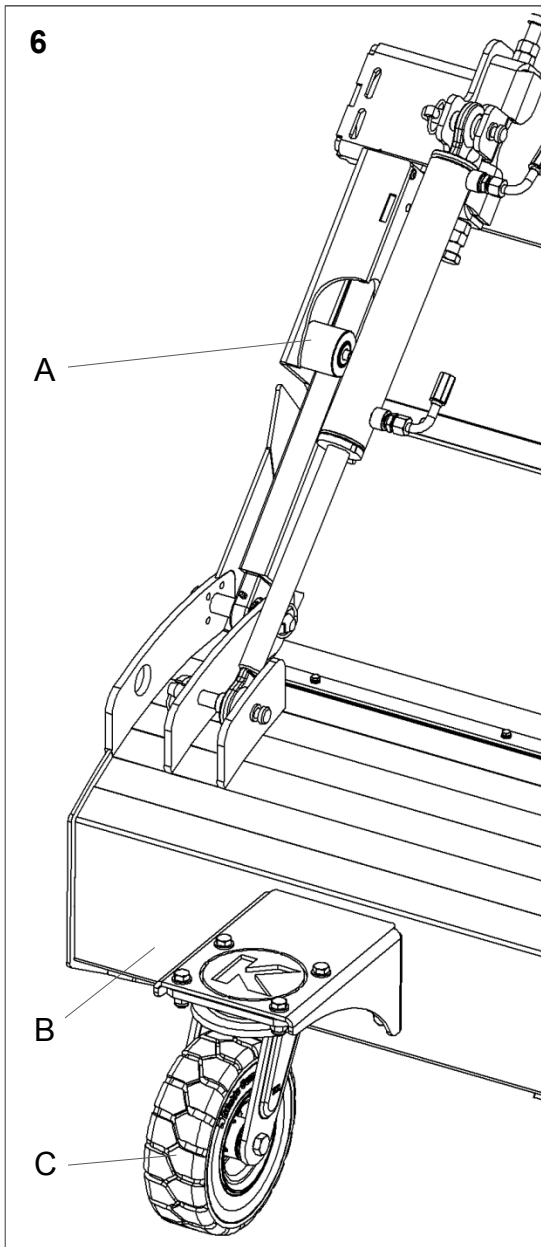
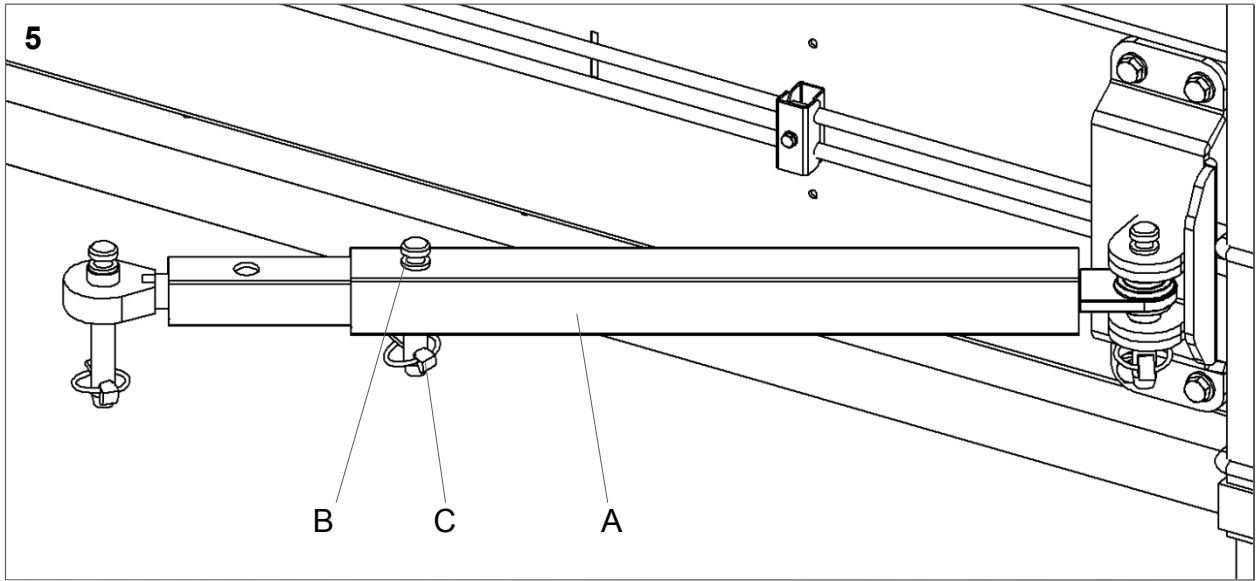
Distributed in UK by
Kersten (UK) Ltd Tel. 0118 986 9253
Progress House
39 Boulton Road Reading, RG2 0NH
www.kerstenuk.com - info@kerstenuk.com

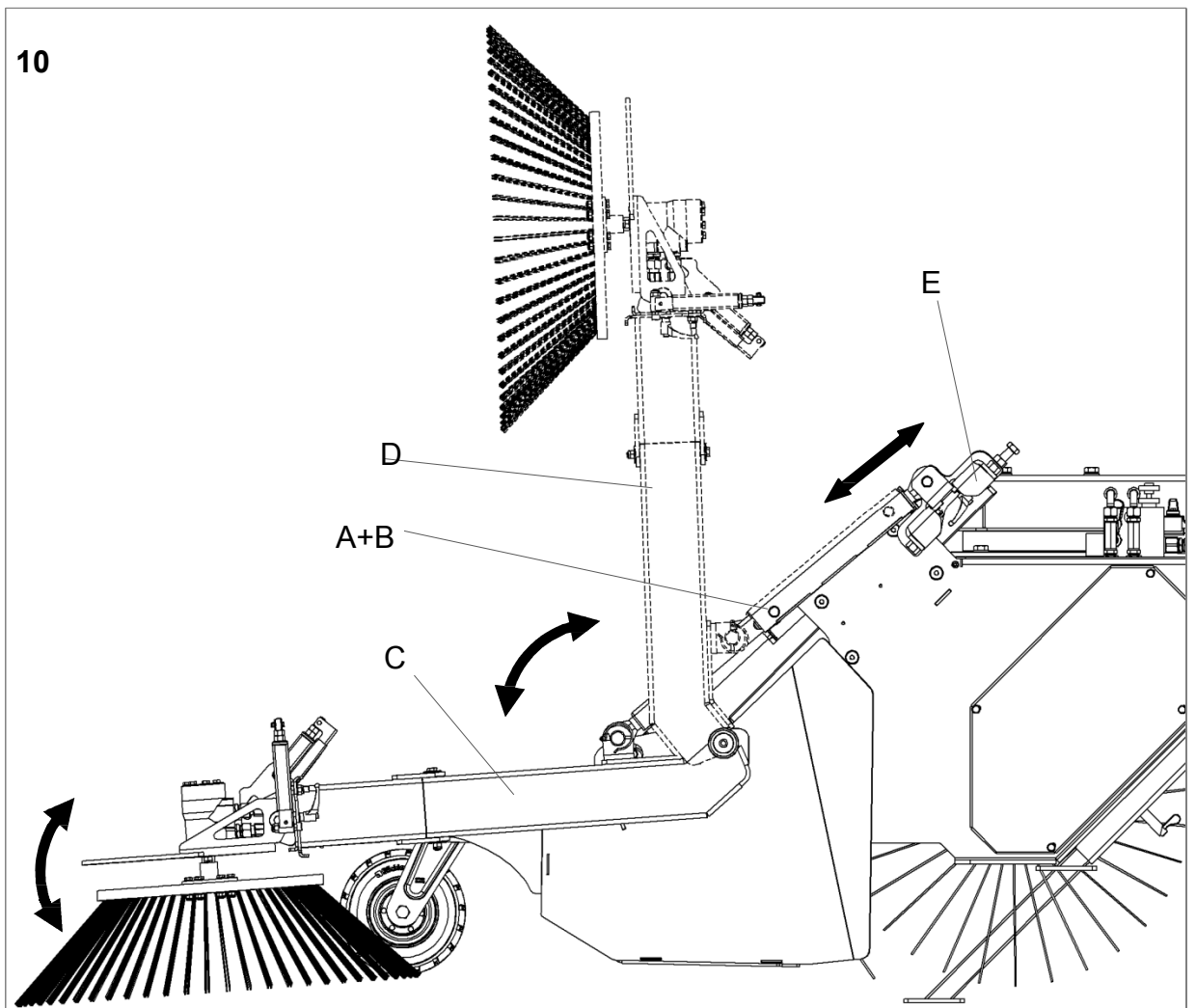
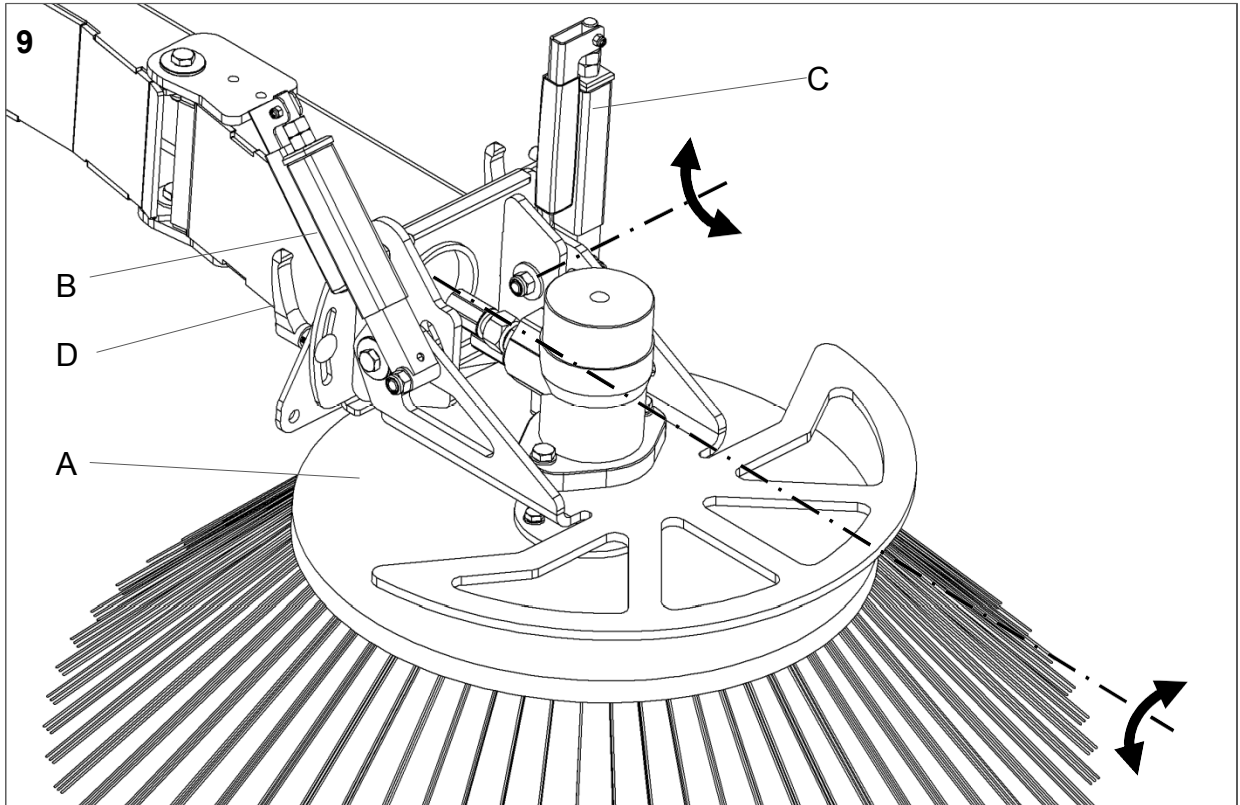
Contents

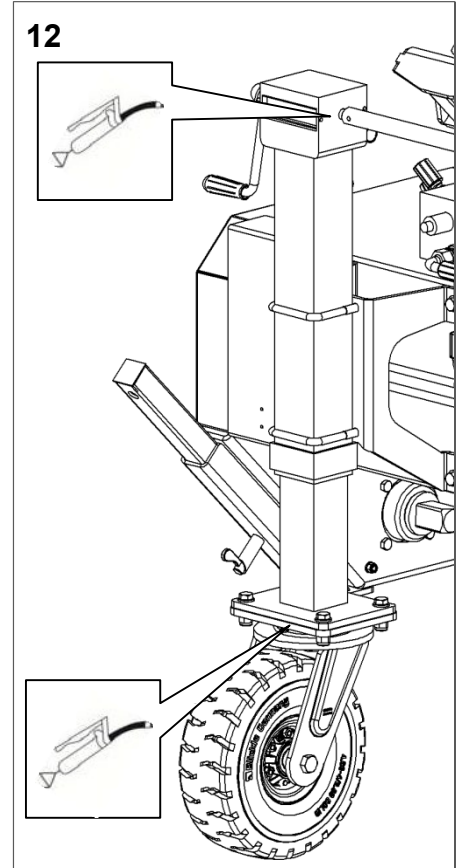
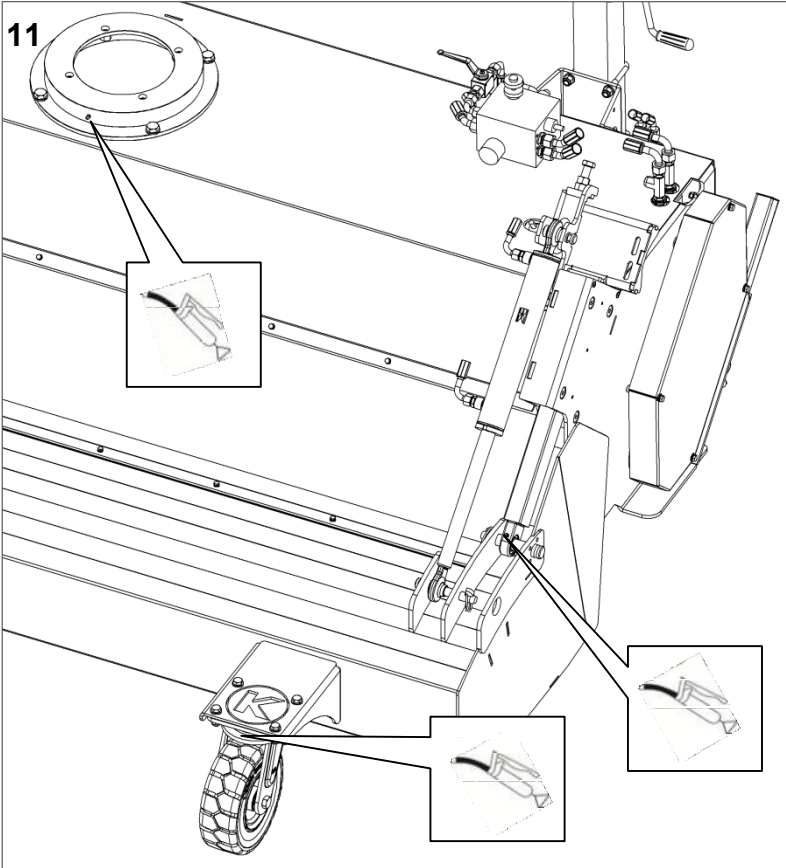
1	Preface	8
2	About this manual	9
2.1	BEFORE COMMISSIONING.....	9
2.2	NOTES ON THIS MANUAL	9
3	Safety instructions for implements	10
3.1	GENERAL.....	10
3.2	PROPER USE	10
3.3	GENERAL SAFETY AND ACCIDENT PREVENTION RULES	10
3.3.1	<i>Basic rules</i>	10
3.3.2	<i>Work and danger area</i>	11
3.3.3	<i>Before starting work</i>	11
3.3.4	<i>During operation</i>	11
3.3.5	<i>Leaving the machine</i>	12
3.3.6	<i>Screw connections and tires</i>	12
3.3.7	<i>Coupling and uncoupling of implements</i>	12
3.3.8	<i>Maintenance, cleaning and repair work</i>	12
3.4	PICTOGRAMS USED.....	13
4	Disposal	14
5	Warranty	14
5.1	EXCEPTIONS.....	14
6	Recommendations	14
6.1	LUBRICANT.....	14
6.2	MAINTENANCE AND REPAIR	14
7	Mounting	15
7.1	MOUNTING THE SWEEPER.....	15
7.2	REPLACEMENT OF THE ROLLER	15
8	Operating	16
8.1	OPERATING INSTRUCTIONS SWEEPER.....	16
8.1.1	<i>Height adjustment of the sweeping roller</i>	16
8.1.2	<i>Setting the speed of the sweeping roller</i>	16
8.1.3	<i>Pivoting the Sweeper</i>	16
8.2	OPERATING INSTRUCTIONS DIRT MATERIAL TANK	17
8.2.1	<i>Adjustment of the collection container</i>	17
8.2.2	<i>Collecting or free-running operation of the sweeper</i>	17
8.3	OPERATING INSTRUCTIONS SIDEBOOK	17
8.3.1	<i>Setting the side broom</i>	17
9	Maintenance	18
9.1	GENERAL MAINTENANCE INSTRUCTIONS	18
9.2	DAILY TESTING.....	18
9.3	MAINTENANCE AFTER 20 HOURS OF OPERATION OR LONGER SERVICE LIFE	18
9.4	STORAGE	18
9.5	FAULTS AND THEIR CORRECTION.....	19
11	Technical data	21
11.1	KEHR MACHINE.....	21
11.2	Drwg.....	21
11.3	DELIVERY SERIAL.....	21
11.4	OPTIONAL EQUIPMENT.....	21
12	EC Declaration of Conformity	22











1 Foreword

Dear Customer,

Thank you for choosing a quality product from Kersten.


This product has been manufactured according to the latest manufacturing techniques and comprehensive quality assurance measures, because only when you are satisfied with your device, our goal is reached.

Before using this machine or implement for the first time, please read this manual thoroughly and thoroughly.

If you do not understand any information contained in this safety data sheet or the product-specific installation or operating instructions, or if you have any questions, please contact your salesperson or the machine manufacturer directly.

Keep this manual handy. If necessary, you can then read important information and handling instructions.

Have fun with your Kersten - device wishes you



Dip.-Ing.(FH) Robert Bosch

Management

2 About this manual

The machine or attachment is subject to technical progress. All information, illustrations and technical data are up-to-date at the time of publication. Changes in the sense of technical progress are reserved to the manufacturer at any time.

Therefore, no claims can be derived from the information and illustrations in this booklet.

2.1 Before commissioning



As self-propelled implements and implements can cause serious accidents or hazards if used improperly, the first time the Kersten implement is commissioned, it must be instructed by competent and authorized persons

absolutely necessary. The best way to familiarize yourself with its basic functions and its handling is to choose a free and level terrain for your first trip.

You reduce the risk of accidents on your part or third parties!

For further information and difficulties of any kind, please contact the dealer, importer or directly to the manufacturer.

Be sure to read the safety instructions on the following pages! Before commissioning, read the operating instructions!

Pass on all safety instructions to other users!

2.2 Notes on this operating manual

Enumerations are marked with eye-catching points.

Example:

- Text
- Text

Instructions are marked according to the order in which they are to be carried out.

Example:

1. Text
2. Text

For details purposes, this manual refers to illustrations and their components in various chapters. The figures are numbered 1, 2, 3, etc. and the components shown there are labeled A, B, C and so on.

Example:

A reference to component C in Figure 2 is given as (2: C)

3 Safety instructions for implements

The safety instructions in this manual can not cover all possibilities and operational situations. It goes without saying that common sense and caution are factors that can not be built into a machine, but must be brought by the person who uses and maintains the machine.

In order to keep the accident risk as low as possible, please observe the following subchapters.

3.1 General



- This symbol indicates a WARNING. Failure to follow the instructions can result in serious personal injury and / or property damage.



- Before starting, read these operating instructions as well as the safety instructions in the operating instructions of the carrier vehicle completely and carefully.

3.2 Intended use



- The sweeper has been developed for sweeping on paved surfaces, sidewalks and facilities for the usual or common use in the field of area care.
- Any other use is considered improper. The manufacturer is not liable for damage resulting from this, the risk being solely borne by the operator.
- Proper use also includes compliance with the operating, maintenance and service conditions prescribed by the manufacturer.
- The attachment may only be used, maintained and repaired by persons who are familiar with it and have been informed about the dangers.
- The relevant accident prevention regulations as well as the other generally accepted safety and occupational medical rules must be observed.
- Unauthorized modifications to the machine lead to the exclusion of liability of the manufacturer for the resulting damage.

3.3 General safety and accident prevention regulations

3.3.1 Basic rules



- In addition to the instructions in this operating manual, observe the generally applicable safety and accident prevention regulations!
- The implement must not be operated by persons under the age of 16, not even under the supervision of an adult! Children and adolescents should be instructed not to play with it.
- Only trained personnel or persons may use this machine!
- When using public traffic routes, observe the relevant regulations!
- When using the attachment on public roads, the provisions of the national road traffic regulations must be complied with, e.g. Reflectors, lighting.
- The user's clothing should fit snugly. Avoid loose-fitting clothing and wear sturdy shoes or safety shoes!
- Only work in good visibility and light conditions!
- The attached warning and information signs provide important information for safe operation; the attention serves your safety!
- Beware of rotating brushes - keep safety distance!
- Be careful with trailing machine parts. Wait for work on them until they are completely stopped!
- There are crushing and shearing points on driven parts!
- Driving behavior, steering and, if applicable, braking capability and tilting behavior are influenced by mounted or attached implements and load. For this reason, only the vom

- Manufacturer approved attachments are used. The working speed must be adapted to the respective conditions.
- Unauthorized modifications endanger the operational safety of the machine and are prohibited!
- Check the machine for operational safety before each use!
- Never remove or change protective devices!
- Never go under the unsecured device for repair or inspection!

3.3.2 Work and danger area



- The user is responsible to third parties in the work area!
- Staying in the danger area of the machine is prohibited! Direct all persons out of the danger zone.
- Before switching on the implement and starting, check the near area. Pay special attention to children and animals. Make sure you have enough sight!
- Before starting work, remove foreign objects from the surface to be worked. Pay attention to other foreign objects during work and eliminate them in good time.
- When working on public roads and squares or in the immediate vicinity, warning and danger signs should be set up to alert third parties.

3.3.3 Before starting work



- Before starting work, familiarize yourself with all the equipment and actuators and their function, and make sure that all safety devices are properly installed and in the protective position. It's too late during the work assignment!
- Check the machine for operational safety before each use!
- Before every start-up, check that the blades and fixing screws are correctly fastened and secured.
- Perform a visual inspection of the hydraulic lines before each use
- Never operate the machine with defective or lost protection devices.

3.3.4 During operation



- Never leave the control room while driving!
- Do not leave the operating station until the sweeping roller of the attachment has come to a complete standstill!
- Do not make any manual adjustments to the attachment during operation - risk of accident!
- The transport of persons and objects is prohibited!
- If, for example, the attachment has caught a foreign object and blocked it, stop the engine and clean the attachment with a suitable tool! When intervening or cleaning the attachment, always switch off the engine! Please observe the safety instructions of the self-propelled implement.
- If the self-propelled implement or attachment is damaged, stop the engine immediately and have the damage repaired.

3.3.5 Leaving the machine

- By using chocks or, if necessary, by the parking brake, secure the machine against rolling away when leaving.
- Secure the device against unauthorized use!
- Never leave the appliance unattended while it is still in operation!

3.3.6 Screw connections and tires



- When working on the wheels, make sure that the device is safely parked and secured against rolling away!
- Repair work on the tires may only be carried out by qualified personnel and with suitable mounting tools!
- If the tire pressure is too high, there is a danger of explosion!
- Check the air pressure regularly.
- Check nuts and bolts regularly for tightness and retighten if necessary.

3.3.7 Coupling and uncoupling attachments



- Only connect and disconnect implements with the engine switched off and the PTO switched off.
- When changing attachments and their parts, use suitable tools and
- Wear gloves.
- When mounting and dismounting, bring the required support equipment into the respective position and ensure sufficient stability.
- Secure the self-propelled work machine and the attachment against rolling away (parking brake, wheel chocks).
- When attaching attachments, there is a risk of injury (crushing). Special care is necessary.
- Attach implements according to regulations and fix in the prescribed places.

3.3.8 Maintenance, cleaning and repair work



- Only carry out maintenance and cleaning work with the drive switched off and the motor stationary!
- If guards and tools are subject to wear, they are regularly check and replace if necessary.
- Only use original spare parts from the manufacturer, as these correspond to the technical requirements and thus the risk of accidents is minimized!
- Carry out cleaning work with the high-pressure cleaner so that the water jet does not flow directly onto the electr. Components, bearings, turned parts, grease nipples, shaft seals, wheel hubs, etc. is held. After each cleaning with the high-pressure cleaner, the lubrication points must be re-greased. In case of infringement, the right to guarantee expires!
- Check the moving parts for ease of movement and if necessary, grease them!
- After maintenance and cleaning work, be sure to refit the guards and put them in the protective position!
- To avoid the risk of fire, keep the machine clean!
- When carrying out maintenance, cleaning and repair work on the lifted device always make sure that it is protected by suitable support elements!

- Before carrying out any repairs, make sure that the hydraulic system is depressurized, because fluids under pressure can penetrate the skin and cause serious injury cause! In case of injury seek medical advice immediately - danger of infection!
- Repairs may only be carried out by qualified personnel.
- Inspect hydraulic hoses at regular intervals for damage and aging and replace if necessary.
- Hydraulic hose lines must be completely replaced every 6 years at the latest. The date of manufacture is stamped on the hose line.
- When welding the tractor or mounted equipment, disconnect the battery.
- Repairs such as welding, grinding, drilling, etc. must not be carried out on supporting and other safety-related parts such as frames, axles, etc.!



3.4 Used pictograms

The following pictograms are located on the device to alert the operator that care should be taken when using and maintaining the device.

Explanation of the pictograms used:



Before commissioning, read and observe the operating instructions and safety instructions.



Never open or remove protective devices while the engine is running!



Follow the instructions in the technical manual. Smudge!



Touch machine parts only when they have come to a complete stop.



Danger from passing parts while the engine is running - keep safety distance!



4 Disposal

The equipment must be disposed of in accordance with local, state, or local regulations.

Depending on the material, you can dispose of the parts in the form of residual waste, special waste or recycling. The company Kersten Arealmaschinen GmbH assumes no disposal.

5 Warranty

The device is accompanied by a sales message, which among other things determines the time of the start of the warranty period. When selling the device, please complete the sales message and send it back to us within 14 days. If warranty claims are asserted without us having a sales message, no warranty service will be provided.

Warranty claims should be submitted promptly, but no later than six weeks after the occurrence of the damage, giving details of the purchase data, otherwise no warranty service will be provided. Complaints must be confirmed by the company Kersten Arealmaschinen GmbH. Wear parts are excluded from the warranty. In addition, the warranty expires in the case of improper operation, in the event of no or incorrect maintenance work, when using inadmissible equipment and when using non-original spare parts.

5.1 Exceptions

The warranty does not cover damage to:

- Failure to observe the supplied operating instructions
- Carelessness
- Incorrect or improper use or assembly
- Use of spare parts that are not original spare parts

The warranty also does not extend to:

- Wear parts such as belts, brooms
- Normal wear

6 Recommendations

6.1 Lubricants

For engine and gearbox, use the specified lubricants (see under "Technical data").

For "open" lubrication points or nipple points we recommend to use bio lubricant oil or bio lubricant grease. With the use of bio lubricants you act ecologically correct, protect the environment and promote the health of people, animals and plants.

6.2 Maintenance and repair

You should only carry out major maintenance and repairs yourself if you have the appropriate tools and knowledge of machines and internal combustion engines.

7 Installation

7.1 Attachment of sweeper



Severe injuries to the operator or third parties may occur. Pay particular attention to the risk of shearing and crushing while attaching or detaching the machine.

Switch off the carrier vehicle, make sure that the hydraulic system is depressurised and remove the ignition key before assembling or disassembling the hydraulic connections.

For the cultivation of the sweeper proceed as follows:

1. Hook the attachment frame (1: K) of the sweeper (1: A) into the front hydraulics or into the interchangeable holder of the carrier vehicle.
2. Align the sweeper so that the base housing (4: N) is parallel to the ground (4: O).
3. Make the hydraulic connections.
4. Lift the sweeper and set the parking supports (1: H) in the upper position.



To dismantle the sweeper, proceed in reverse order. Make sure that the broom (1: C) does not rest on the surface after it has been parked.

7.2 Replacing the sweeping roller

Changing the sweeping roller is easiest to do when the sweeper is mounted on a host vehicle.

Here's how to change the broom (2: C):

1. Open the collecting container (2: B) and secure it by closing the stopcock (2: D).
2. Place the sweeper on the ground.
3. Disassemble the 5 countersunk screws (2: E) on the right side and remove the side panel (2: A).
4. Pull the entire sweeping roller (2: C) to the right so that it releases from the left bearing point.
5. Lift the sweeper and drive backwards a bit so that you can safely approach the sweeping roller (2: C).
6. Disassemble 4 screws each (3: C), replace the broom halves (3: A) on the roller brush basket (3: B) and fix the new broom halves with the four screws (3: C).
7. Proceed in the reverse order for installation. When attaching the sweeping roller (2: C) to the bearing points (2: G), make sure that the square (2: F) is in the correct position.

8 Operation

8.1 Operating instructions Sweeper



When working, always make sure that the basic housing of the sweeper is parallel to the ground!

8.1.1 Height adjustment of the sweeping roller:

Place the sweeper attached to a carrier vehicle on supersized parking stands (4: H) on level ground. Make sure that the housing cover (4: N) is parallel to the ground (4: O).

The sweeping roller (4: C) is firmly mounted in the basic housing (4: P). To adjust the height of the sweeping roller, the complete basic machine is raised or lowered via the wheel supports (4: F). Using the hand crank (4: L) on the left-hand wheel in the direction of travel, adjust the height of the sweeper so that the sweeping roller (4: C), when standing in the direction of travel, treats a strip approx. 10-12 cm wide on the ground.

The through drive (1: G) of the two wheel supports (1: F) ensures a uniform setting of the machine!



Note:

A sweeping roller that is set too tightly does not produce better sweeping results but rather worsens the sweeping effect and leads to significantly higher wear of the sweeping roller. Depending on the wear of the sweeping roller, be sure to adjust the height setting of the support wheels. In order to achieve a better sweeping result when heavily soiled, if the sweeping roller is set correctly, only the speed of the sweeping roller can be increased or the driving speed reduced.



Storage:

Never place the sweeper in such a way that the sweeping roller rests on the ground!

Put the dust caps over the hydraulic connectors!

8.1.2 Setting the speed of the sweeping roller

The speed of the sweeping roller can be adjusted via the flow control valve (2: R) on the hydraulic block (2: S). (Exception: with the additional option "KM-Control" the speed setting is not possible!)

8.1.3 Pivoting the sweeper

The sweeper can be swung laterally to the left or right according to the resulting work just or especially for the free-teaching operation. Depending on the equipment of the machine, this is done mechanically by hand or hydraulically.

- **Manual adjustment:**
Remove the linch pin (5: C) and the pin (5: B) from the manual adjustment (5: A). Swing the sweeper into the desired position and secure the manual adjustment (5: A) again with the locking pin (5: B) and the linch pin (5: C).
- **Hydraulic side adjustment without solenoid changeover valve:**
Actuate the corresponding hydraulic system of the carrier vehicle to swing the machine into the desired position.
- **Hydraulic side adjustment with solenoid changeover valve:**
Disconnect the work and stop the hydraulic supply to drive the sweeping roller. Only now activate the switch for the solenoid changeover valve and use the hydraulics of the carrier vehicle to swivel the machine into the desired position. Continue working without activating the switch for the solenoid changeover valve.

8.2 Operating instructions Dirt collecting container

8.2.1 Setting the collection container

Make sure that the basic housing of the sweeper is parallel to the ground! The sump must only be adjusted in inclination to the ground. By means of the suspension of the collecting container in a roller guide system (6: A), the collecting container (6: B) automatically adapts to the unevenness of the ground via the wheels (6: C). To adjust the inclination, loosen the stop nuts (7: B) of the adjustment slide (7: A) and the lock nuts (7: C) of the set screws (7: D). Now set the desired position using the adjusting screws (7: D), clamp the adjusting slide (7: A) with the adjusting screws (7: D) and tighten the locknuts (7: C) and the locknuts (7: B) back to. Make sure that the adjustment slides (7: A) are in the same position on the left and right side!

In the operating condition, the collecting container should be parallel to slightly inclined backwards to the ground (4: O).

8.2.2 Collecting or free-running operation of the sweeper

With attached collecting container, the sweeper can be used in dirt receiving or free-running operation.

- **Collecting operation:**

Open the shut-off valve (2: D). If pressure is now applied by the hydraulics of the carrier vehicle to the feed connection of the sweeper, the collecting container closes and the sweeping roller begins to rotate. If pressure is applied to the return connection of the sweeper, the collecting container opens and the dirt collected is emptied.

- **Free-running operation:**

Apply pressure to the sweeper's return port so the hopper (2: B) swings up. Then close the shut-off valve (2: D). If pressure is now applied to the flow connection, the collection container remains open and the sweeping roller is directly driven. Thus, the dirt in the swept state of the sweeper (see 8.1) can be e.g. be swept to the curbside.

8.3 Operating instructions Side brush

The side broom is switched on via the three-way cock (8: D) or set in the speed of the pan plate (9: A). As soon as the sweeping roller (1: C) is driven, it runs along.

8.3.1 Setting the side broom

When adjusting the side broom, make sure that the base housing (4: N) is parallel to the ground (4: O) and that the dirt collector is set (see 8.2.1).

The height is adjusted via the adjustment slide (8: A). Loosen the clamping levers (8: B) and (8: E) and set the side brush to the desired position with the adjusting screws (8: C). Tighten the clamping levers (8: B) and (8: E) again.

The lateral inclination of the plate (9: A) is adjusted via the spindle (9: C). To adjust, loosen the clamping lever (9: D), then tighten again.

The angle of the plate in the direction of travel is set via the spindle (9: B).

The plate brush should be tilted approx. 10-15 ° outwards and slightly forward in the direction of travel. The bristles should stand approx. 3cm above the ground on the inside towards the collection container.

When not in use, stop the hydraulic supply via the three-way cock (8: D), fold up the side brush and secure with the locking pin (10: A) and the linch pin (10: B). This is at the same time the storage and transport position of the side broom.

9 Maintenance

9.1 General maintenance instructions



- Failure to comply may result in injury to persons or damage to the machine. Before using the machine, check all safety-relevant parts.
- The machine must be regularly serviced.
- Repairs, maintenance and cleaning work as well as the elimination of malfunctions must only be carried out with the implement disconnected. To do this, also disconnect the hydraulic connection to the carrier vehicle.
- During all work, the machine must be secured against rolling or tipping by taking suitable measures.
- Check nuts and bolts regularly for tightness and retighten if necessary.
- Only use original spare parts from the manufacturer!
- Check all bolt and bolt connections after the first 5 hours of operation.
- Once all work has been completed, all disassembled protective devices must be properly replaced.
- Lubricate or lubricate all moving parts.

9.2 Daily exam

- Check the tools / brushes for tightness.
- Check the safety elements and moving parts for wear before each use.
- Perform a test run before each use.
- Clean the device after each use

9.3 Maintenance after 20 operating hours or longer downtime

- At regular intervals at the latest after 20 operating hours and always at the beginning and end of the season, the moving parts of the unit must be greased or oiled.
- Grease all lubrication points shown on the lubrication chart (Fig. 11 + 12).

9.4 Storage

If the machine is not used for a long time, the following measures are recommended:

- Carry out cleaning.
- Check the function of all parts.
- Check all screws and bolts for tightness and tighten them if necessary.
- Replace worn or damaged components, only use original Kersten spare parts!
- Regressed the lubrication points (=> grease nipple) (Fig. 11 + 12).
- Position the machine and protect it from the weather to prevent corrosion. Do not place the machine in damp rooms, stables or artificial fertilizer warehouses.

9.5 Faults and their rectification



This chapter describes in more detail the most important faults which can occur during operation on the sweeper. Any faults that require major intervention must always be rectified by your specialist workshop.

Problem:	Possible cause:	Remedy:
Hydraulic motor does not turn	Vehicle does not run	Start carrier vehicle
	Hydraulic power take-off not switched on	Switch on hydraulic auxiliary drive
	Hydraulic hoses not connected	Connect hydraulic hose
	Hydraulic connector not engaged	Check hydraulic connector, if necessary, insert unit it clicks into place
	No hydraulic fluid in the hydraulic tank	Top up hydraulic fluid in the hydraulic tank
Sweeping roller turns too slowly	Speed set too low	Increase the speed at the flow control valve
	Hydraulic fluid too low	Top up hydraulic fluid in the hydraulic tank
	Leakage on the hydraulic hoses	Replace hydraulic hoses
	Leakage at the hydraulic connector	Release hydraulic connector and insert again until it clicks into place. If leakage persists, check the hydraulic connector and replace if necessary.
	Leakage at the hydraulic screw connection	Slightly loosen the hydraulic screw connection, move the hose slightly and tighten the hydraulic screw connection again.
	Contact pressure on the ground too large.	Align the machine higher so that the sweeping roller is relieved.

Height adjustment stiff	Wheel supports not greased	Wheel supports at the lubrication points Lubricate. Possibly, additionally, use creep oil and grease the threaded spindle.
Sweepings remain lying / does not sweep clean	Driving speed too high	Reduce driving speed.
	Broom speed too high / too low	Reduce or increase broom speed
	Sweeping roller height set too high	Adjust the sweeping roller height according to the specifications
	Collecting container set too high	Set the collection container to the correct height
	Side brush set incorrectly	Adjust the side brush properly

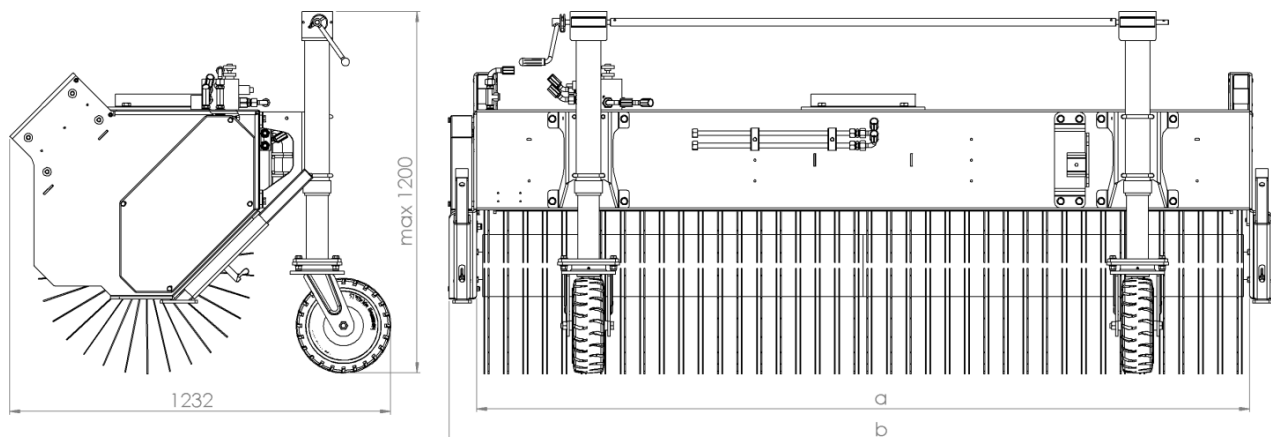
11 Technical data

11.1 Sweeper

Type	KM 25070 H	KM 27070 H	KM 30070 H
Working width a	250 cm	270 cm	300 cm
Working width a with swivelled KM	ca. 223 cm	ca. 241 cm	ca. 268 cm
Total width b (without additional equipment)	266 cm	286 cm	316 cm
Sweeping rollers Ø	70 cm	70 cm	70 cm
Drive	hydraulic	hydraulic	hydraulic
Mass	about 750 kg	about 770 kg	about 800 kg
Hydraulic oil	Avia N 46	Avia N 46	Avia N 46
Amount of oil	About liters	About liters	About liters

11.2 Dimension sheet

Dimensions for working width a can be found in Table 11.1.



11.3 Scope of delivery as standard

- Combined drill roller with poly-twist trim eight rows
- Solid rubber heavy duty wheels

11.4 Additional equipment

- Dirt collecting container with hydraulic container emptying
- Splash guard (for operation without dirt collecting container)
- Hydraulic swivel device right / left (1 additional dw connection required)
- Hydraulic swivel device right / left incl. Solenoid changeover valve
- Side broom Ø850 left and / or right
- On scratch bar
- Water blasting device (for low or high pressure operation)
- Water tank incl. Low pressure pump
- Further sweeping rollers on request

12 EG – Konformitätserklärung

CE Déclaration de conformité EC Declaration Conformity EG conformiteitsverklaring

(D)	(F)	(GB)	(NL)
Wir	Nous	We	Wij
Kersten Arealmaschinen GmbH Empeler Straße 95, D- 46459 Rees			
erklären, dass das Produkt	déclarons que le produit	herewith declare that the product	verklaren dat het produkt
Frontkehrmaschine	Balayeuse de front	Front sweeper	Frontveegmachine
KM 25070 H; KM 27070 H; KM 30070 H			
mit allen einschlägigen Bestimmungen der EG-Maschinenrichtlinie 2006/42/EG in Übereinstimmung ist.	satisfait à l'ensemble de la directive machines 2006/42/CE.	fulfiles all relevant provisions of Directive 2006/42/EC.	voldoet aan alle toepasselijke bepalingen van EG-Machinerichtlijn 2006/42/EG.
Die Maschine ist auch in Übereinstimmung mit allen einschlägigen Bestimmungen der folgenden EG-Richtlinien:	Cette machine satisfait également à toutes les dispositions pertinentes des directives CE suivantes:	The machinery is also in compliance with all relevant provisions of the following EC directives:	De machine is ook in overeenstemming met alle toepasselijke bepalingen van de volgende EG-richtlijnen:
Weiterhin wurden folgende Normen angewendet:	En outre, les normes et spécifications techniques suivantes ont été utilisées:	The following harmonised standards apply:	Volgende geharmoniseerde normen warden gehanteerd:
EN ISO12100:2010			
Herr	Monsieur	Mr.	De heer
Dipl. Ing. (FH) Robert Bosch Empeler Straße 95, D- 46459 Rees			
ist bevollmächtigt die technischen Unterlagen zusammenzustellen.	est autorisé à constituer la documentation Technique conformément à l'annexe VII A.	is authorised to compile the technical file according to Annex VII A.	is gemachtigd het technische dossier samen te stellen.
Rees, 03.11.2016 			
Geschäftsführer	Directeur	Managing Director	Bedrijfsleider

Kersten

SITE MAINTENANCE EQUIPMENT

Distributed in UK by
Kersten (UK) Ltd Tel. 0118 986 9253

Progress House
39 Boulton Road Reading, RG2 0NH
www.kerstenuk.com - info@kerstenuk.com