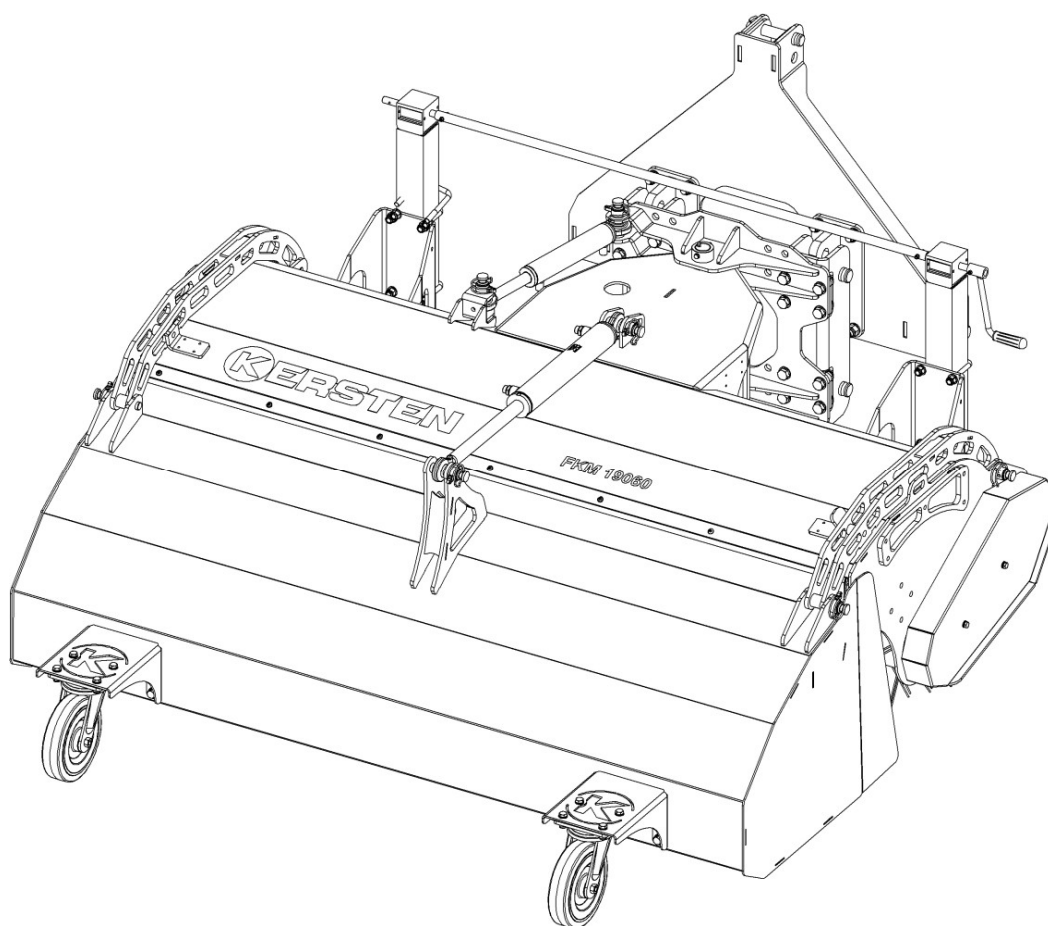




Spare Parts Lists

Professional Sweeper FKM 60L

FKM 13060; FKM 15060



Order number: E00110 From machine no: Rev.: R00 Date: 03.09.2018



Manufactures by
Kersten Arealmaschinen GmbH
Empeler Straße 95
D - 46459 Rees
www.kersten-maschinen.de

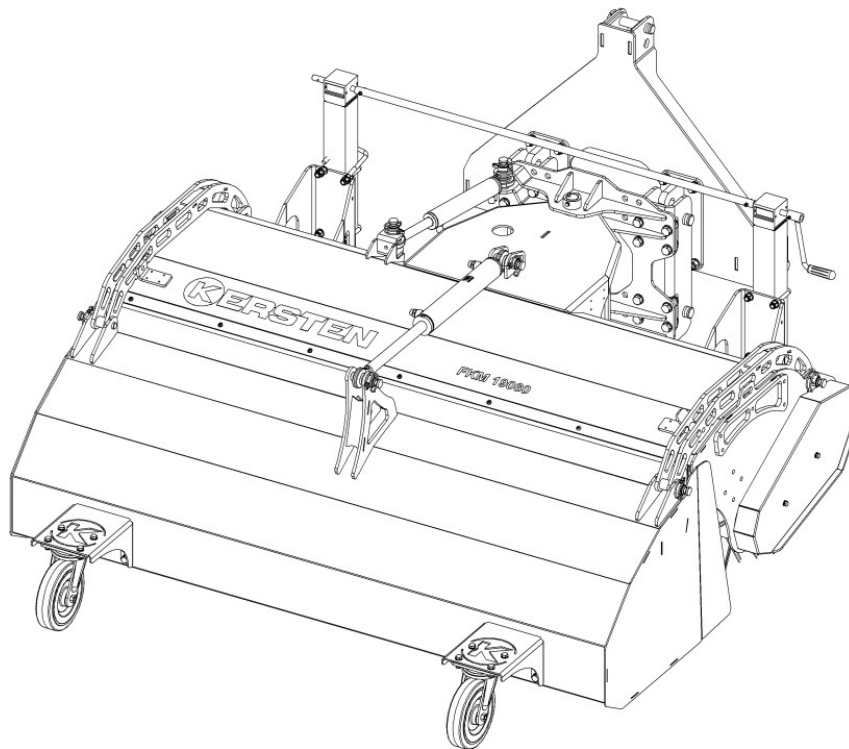


Distributed in UK by
Kersten (UK) Ltd Tel. 0118 986 9253
Progres House 39 Boulton Road
Reading, RG2 0NH
www.kerstenuk.com - info@kerstenuk.com

Table of Contents

1	MODEL OVERVIEW.....	4
1.1	FKM 13060 – C07586 R00	4
1.2	FKM 15060 – C07587 R00	4
2	ASSEMBLY OVERVIEW	5
2.1	BASIC UNIT	5
2.1.1	FKM 13060 H – C06810 R00.....	6
2.1.2	FKM 15060 H – C07581 R00	7
2.2	STORAGE OF ROLLERS - C10407 R00.....	8
3	ACCESSORIES FOR SWEEPING MACHINE	10
3.1	DIRT CONTAINER ASSEMBLY.....	10
3.1.1	SSB FKM 13060 - C0 R00.....	11
3.1.2	SSB FKM 15060 – CR00.....	11
3.2	HSZ- 180 KM 60 HYDRAULIC SWIVELING DEVICE - C R00.....	12
3.3	ASH 7060 R – BODYBOOKING 70 CM BESEN Ø, RIGHT – C10305 R00	13
3.4	ASH 7060 L - BODYBOOKING 70 CM BESEN Ø, LEFT – C10017 R00	15
3.5	ASSEMBLY AKL	17
3.5.1	On scratch bar AKL 13060 – C1 R00	18
3.5.2	On scratch bar AKL 15060 – C1 R00	18
4	PENDANT COMPENSATION FKM Ø60 HEAVY VERSION – C10128 R00	19
	19	
5	SWEEPING ROLLERS 70 CM ROLLING DIAMETER.....	20

1 Model Overview



1.1 FKM 13060 – C07586 R00

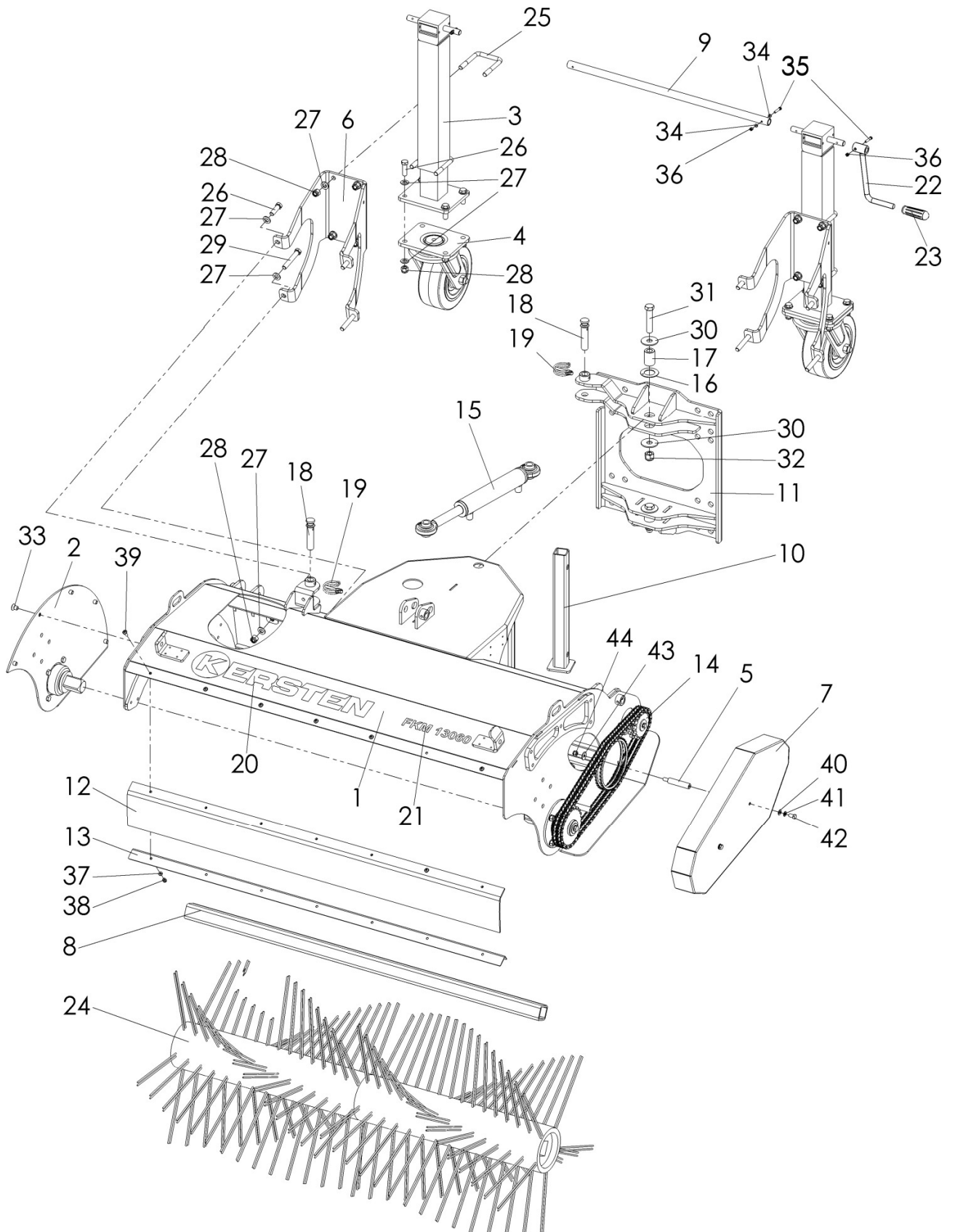
No.	Item No.	Nu.	Designation
1	C06256 R00	1	Basic unit
1	C10296 R00	1	Storage sweeping roller

1.2 FKM 15060 – C07587 R00

No.	Item No.	Nu.	Designation
1	C10027 R00	1	Basic unit
1	C10296 R00	1	Storage sweeping roller

2 Overview of Modules

2.1 Basic unit



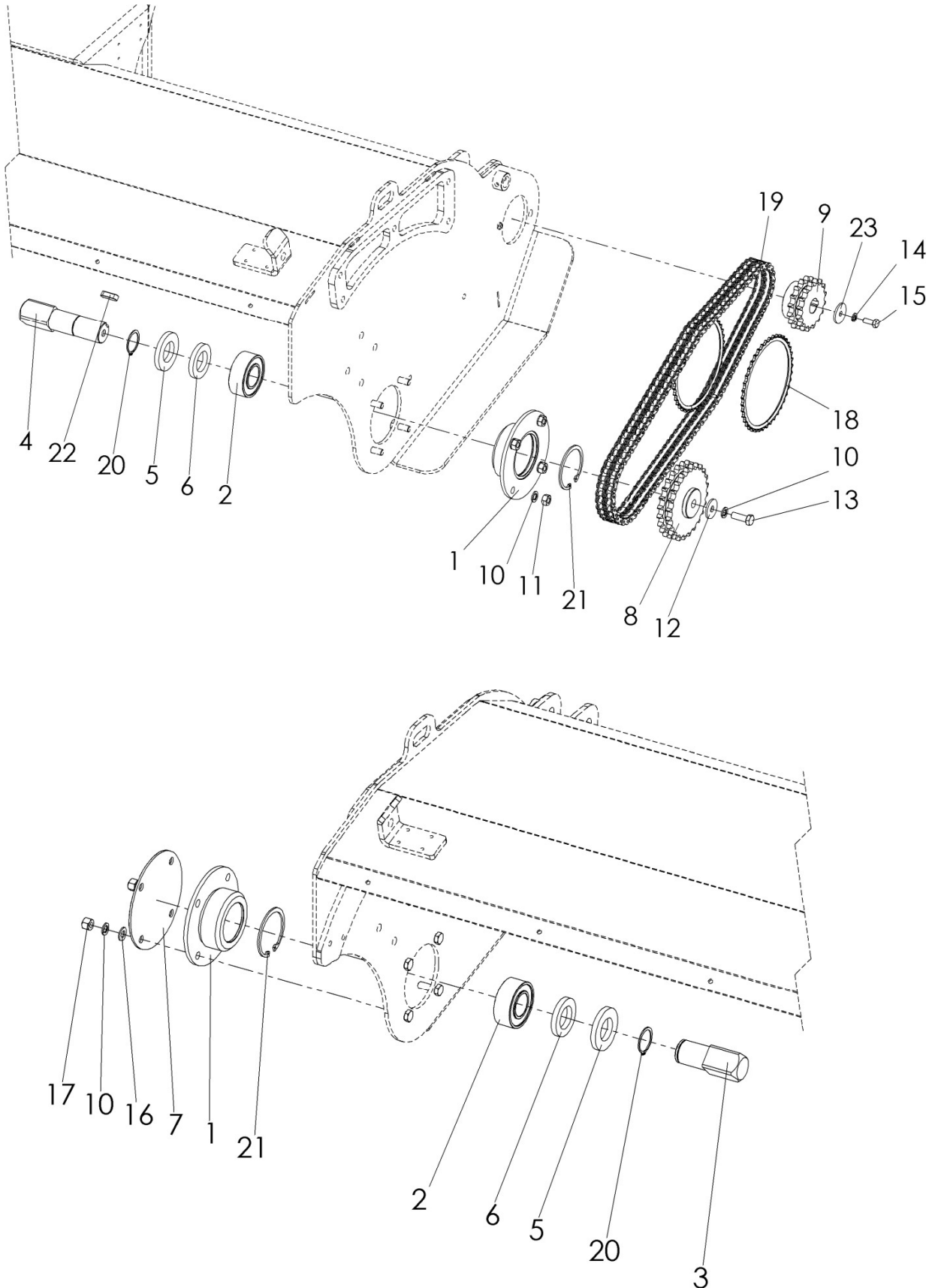
2.1.1 FKM 13060 H – C06810 R00

No.	Item No.	Nu.	Designation 1
1	C06256	1	Basic housing compl.
2	C10013	1	Lower part compl. Side panel right
3	942 590 001	2	parallel stay
4	926 300 301	2	Swivel castor Ø200x85
5	C02584	2	Stand Off
6	C10137	2	Anbaubock parallel supports
7	C06849	1	Chain protection cover
8	C10018	1	KW-axis
9	C10031	1	Cross tube wheel supports
10	C06901	1	Parking support compl.
11	C06917	1	ABR machine side compl.
12	C10251	1	Rubber flaps
13	C10033	1	Angle plate rubber strip
14	C10407	1	Storage sweeping roller
15	933 101 180	1	Hydraulic cylinders
16	915 001 016	2	Thrust washer
17	705 301 744	2	Rifle
18	750 000 028	2	Locking pin secured at the top
19	907 190 550	2	Pipe linch pin
20	950 900 115	1	Kersten stickers
21	950 190 600	1	Sticker
22	C10841	1	Winch
23	942 001 012	1	Handle
24	130 610 060	2	Combination broom
25	901 512 370	4	U-bolt
26	901 012 040	12	Skt.-screw without shank
27	905 112 000	40	Washer
28	900 012 002	24	Stop mother
29	901 112 080	4	Skt. Screw with shank
30	905 216 000	4	K-disc
31	901 016 080	2	Skt.-screw without shank
32	900 016 002	2	Stop mother
33	901 210 016	5	Countersunk screw with inner socket.
34	905 105 000	4	Washer
35	901 005 030	3	Skt.-screw without shank
36	900 005 002	3	Stop mother
37	905 106 000	8	Washer
38	900 006 002	8	Stop mother
39	903 906 020	7	Linsenkopfschraube with Innenskt.
40	905 108 000	2	Washer
41	905 008 000	2	Spring washer
42	901 008 016	2	Skt.-screw without shank
43	905 208 025	2	K-disc
44	900 008 002	2	Stop mother

2.1.2 FKM 15060 H – C07581 R00

No.	Item No.	Nu.	Designation 1
1	C10027	1	Basic housing compl.
2	C10013	1	Side part below compl. right
3	942 590 001	2	Parallel stay
4	926 300 301	2	Swivel castor Ø200x85
5	C02584	2	Stand Off
6	C10137	2	Anbaubock parallel supports
7	C06849	1	Chain protection cover
8	C10019	1	KW-axis
9	C10032	1	Cross tube wheel supports
10	C06901	1	Parking support compl.
11	C06917	1	ABR machine side compl.
12	C10252	1	Rubber flaps
13	C10034	1	Angle plate rubber strip
14	C10407	1	Storage sweeping roller
15	933 101 180	1	Hydraulic cylinders
16	915 001 016	2	Thrust washer
17	705 301 744	2	Rifle
18	750 000 028	2	Locking pin secured at the top
19	907 190 550	2	Pipe linch pin
20	950 900 115	1	Kersten stickers
21	950 190 600	1	Sticker
22	C10841	1	Winch
23	942 001 012	1	Handle
24	130 610 060	2	Combination broom
25	901 512 370	4	U-bolt
26	901 012 040	12	Skt.-screw without shank
27	905 112 000	40	Washer
28	900 012 002	24	Stop mother
29	901 112 080	4	Skt. Screw with shank
30	905 216 000	4	K-disc
31	901 016 080	2	Skt.-screw without shank
32	900 016 002	2	Stop mother
33	901 210 016	5	Countersunk screw with inner socket.
34	905 105 000	4	Washer
35	901 005 030	3	Skt.-screw without shank
36	900 005 002	3	Stop mother
37	905 106 000	8	Washer
38	900 006 002	8	Stop mother
39	903 906 020	7	Linsenkopfschraube with Innenskt.
40	905 108 000	2	Washer
41	905 008 000	2	Spring washer
42	901 008 016	2	Skt.-screw without shank
43	905 208 025	2	K-disc
44	900 008 002	2	Stop mother

2.2 Storage sweeping roller - C10407 R00

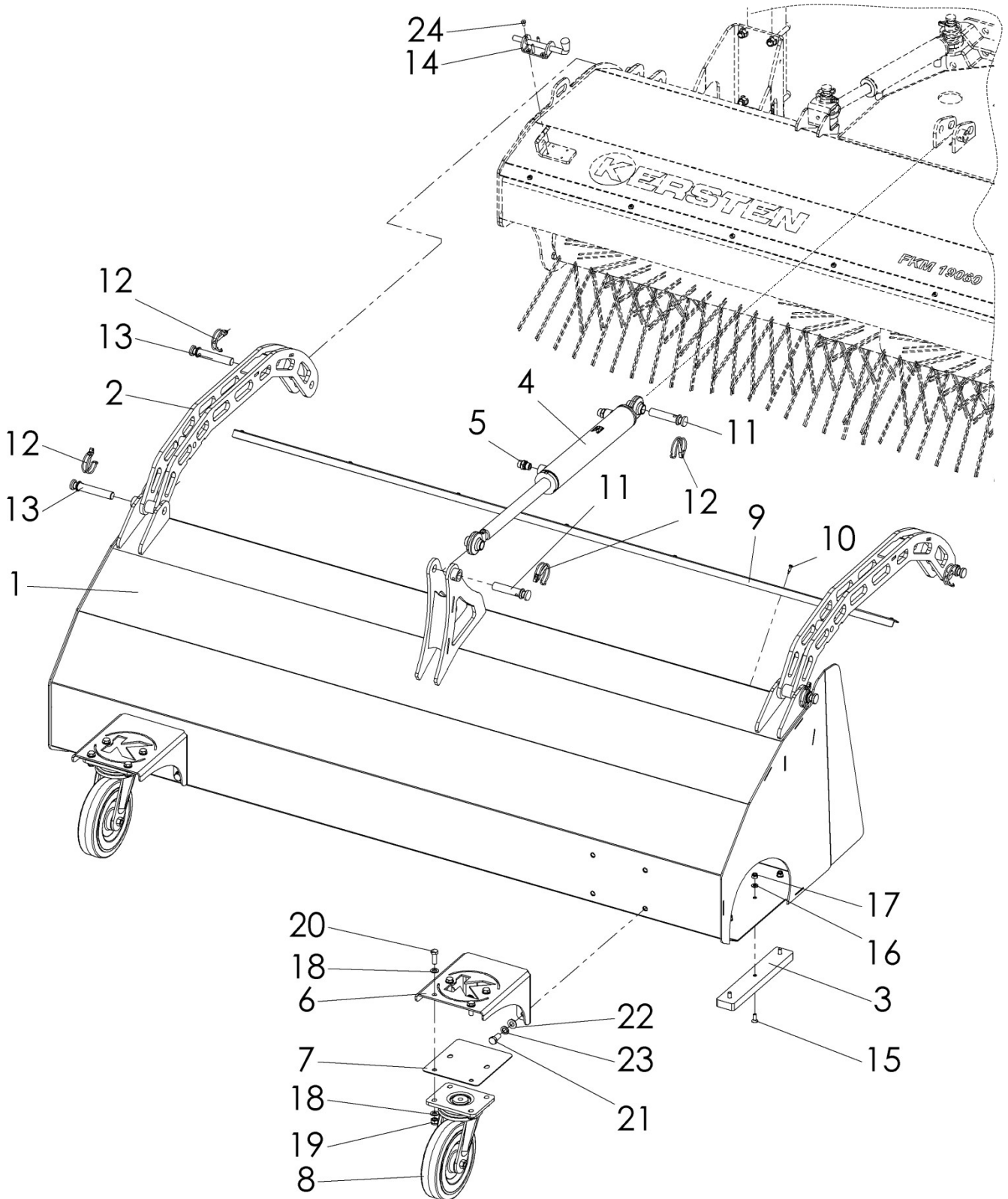


Storage sweeping roller C10407 R00

No.	Item No.	Nu.	Designation
1	C04444	2	Bearing housing complete
2	924 103 207	2	Dual ball bearing
3	C04606	1	Drive stub right
4	C04607	1	Drive stub left
5	C04419	2	Spacer large
6	C04420	2	Spacer small
7	C04432	1	Cover
8	C02652	1	Sprocket, compl.
9	C02653	1	Sprocket drive side
10	905 010 000	9	Spring washer
11	900 010 001	4	Hexagon nut
12	905 210 303	1	K-disc
13	901 010 030	1	Skt.-screw without shank
14	905 008 000	1	Spring washer
15	901 008 020	1	Skt.-screw without shank
16	905 110 000	4	Washer
17	900 010 003	4	Cap nut flat
18	920 108 034	2	Roll-ring chain tensioner for chain
19	920	1	Duplex chain
20	905 935 000	2	Circlip outside
21	906 000 720	2	Circlip inside
22	908 010 830	1	Adjusting spring
23	705 360 803	1	Washer

3 Accessories for Sweeper

3.1 Dirt collecting container assembly



3.1.1 SSB FKM 13060 - C0 R00

No.	Item No.	Nu.	Designation 1
1	C10003	1	SSB compl.
2	C06760	2	Support arm compl.
3	C06881	4	Plastic sliding strip
4	933 103 006	1	hydraulic cylinders
5	931 071 238	2	Hydraulic connection
6	C07028	2	Wheel holder SSB
7	C07029	2	Wheel holder contrast plate
8	926 300 303	2	Swivel castor Ø200x50
9	130 000 635	1	Angle rail
10	902 648 119	7	Lin sink drilled screw with Torx
11	750 000 028	2	Locking pin secured at the top
12	907 190 550	6	Pipe linch pin
13	C07128	4	Locking pin secured at the top
14	907 501 060	2	Bolt sprung
15	901 208 020	12	Countersunk screw with inner socket.
16	905 108 000	12	Washer
17	900 008 002	12	Stop mother
18	905 110 000	16	Washer
19	900 010 002	8	Stop mother
20	901 010 030	8	Skt.-screw without shank
21	901 012 025	8	Skt.-screw without shank
22	905 112 000	8	Washer
23	905 012 000	8	Spring washer
24	901 206 012	8	Countersunk screw with inner socket.

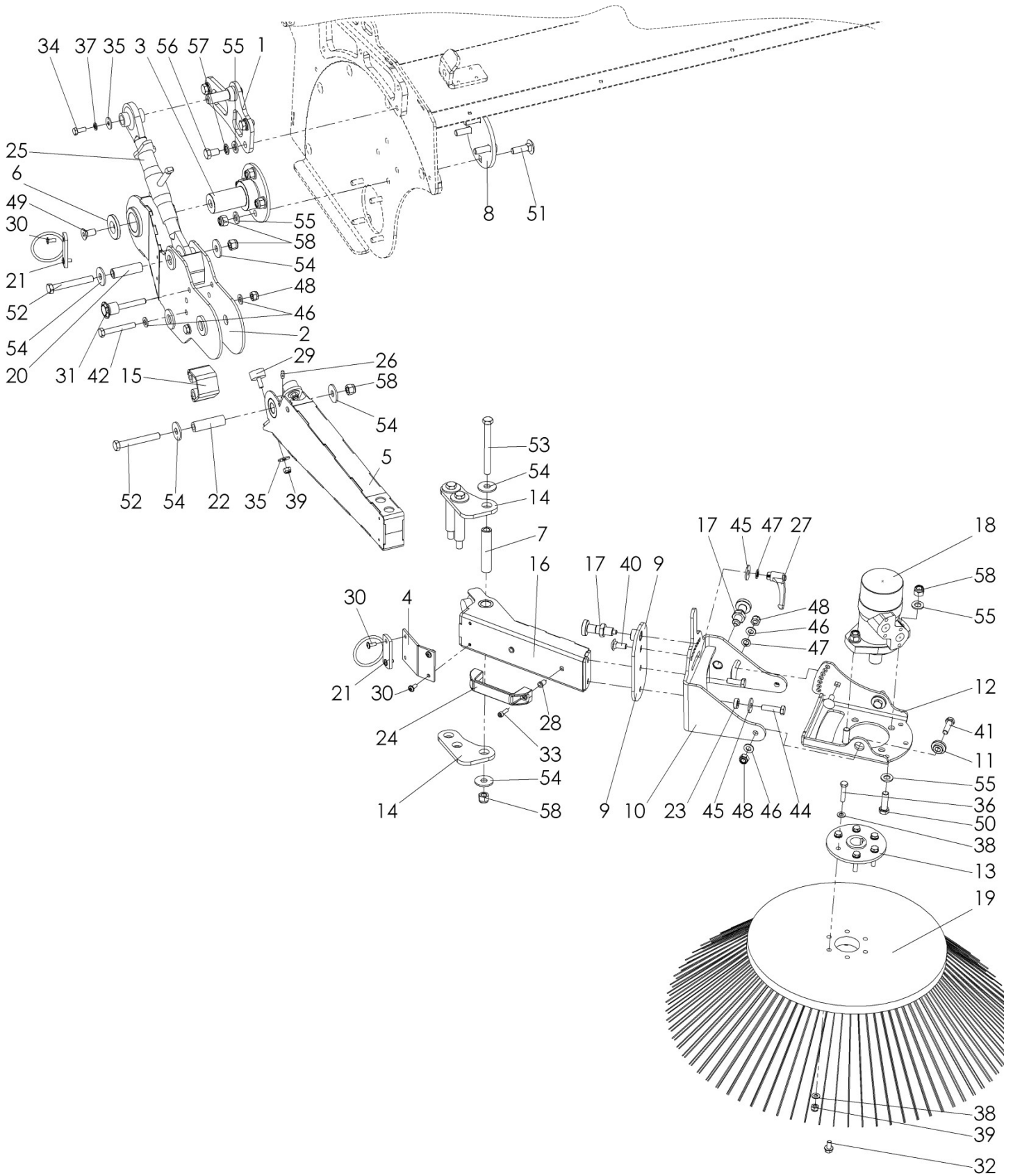
3.1.2 SSB FKM 15060 – CR00

No.	Item No.	Nu.	Designation 1
1	C06449	1	SSB compl.
2	C06760	2	Support arm compl.
3	C06881	4	Plastic sliding strip
4	933 103 006	1	Hydraulic cylinders
5	931 071 238	2	Hydraulic connection
6	C07028	2	Wheel holder SSB
7	C07029	2	Wheel holder contrast plate
8	926 300 303	2	Swivel castor Ø200x50
9	150 000 030	1	Angle rail
10	902 648 119	7	Lin sink drilled screw with Torx
11	750 000 028	2	Locking pin secured at the top
12	907 190 550	6	Pipe linch pin
13	C07128	4	Locking pin secured at the top
14	907 501 060	2	Bolt sprung
15	901 208 020	12	Countersunk screw with inner socket.
16	905 108 000	12	Washer
17	900 008 002	12	Stop mother
18	905 110 000	16	Washer
19	900 010 002	8	Stop mother
20	901 010 030	8	Skt.-screw without shank
21	901 012 025	8	Skt.-screw without shank
22	905 112 000	8	Washer
23	905 012 000	8	Spring washer
24	901 206 012	8	Countersunk screw with inner socket.

3.2 HSZ- 180 KM 60 Hydraulic swivel device - C R00

No.	Item No.	Nu.	Designation 1
1	933 103 005	1	Hydraulic cylinders
2	932 ...	2	Hydraulic plug, depending on the tractor
3	930 ...	2	Hydraulic hose, depending on tractor

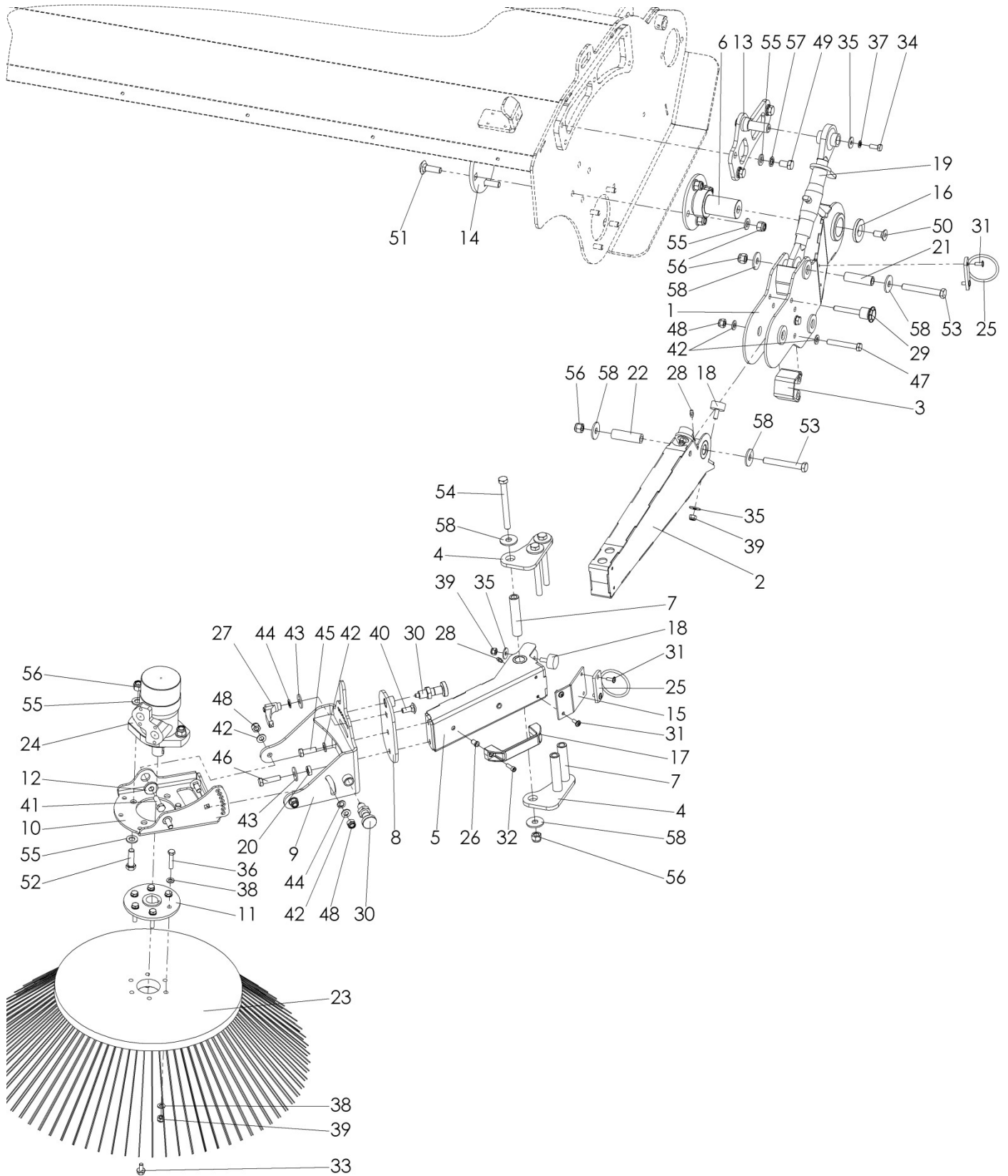
3.3 ASH 7060 R – Mounted side brush 70 cm broom Ø, right – C10305 R00



C10305R00

No.	Item No.	Nu.	Designation 1
1	C07266	1	Top link mount right compl.
2	C07228	1	Basic arm compl.
3	C07190	1	Locating bolt compl.
4	C10284	1	protective rubber
5	C07235	1	Intermediate arm compl.
6	C05534	1	Lock washer with countersink
7	C07219	3	Rifle
8	C07252	1	Counter plate locating bolt
9	C07259	1	Face plate compl.
10	C07261	1	Plate swivel plate compl.
11	C06167	2	Collar bushing
12	C07253	1	Engine mount
13	C03832	1	Mounting flange pulled up
14	C07250	2	Schraubla pivot point
15	C07241	1	Stop compl
16	C07244	1	Swivel arm compl.
17	907 501 108	2	Indexing plungers
18	935 102 200	1	Hydraulic motor
19	713 000 650	1	Side brush
20	705 193 063	1	Rifle
21	050 459 020	2	Hose holder
22	705 200 466	1	Rifle
23	705 200 507	1	Rifle
24	941 310 005	1	Anschraubgriff
25	950 101 060	1	Top link
26	910 006 000	3	grease nipple
27	941 200 210	1	Clamping lever
28	900 006 006	2	Retractable sleeve with countersunk head
29	911 108 030	3	Rubber-metal buffer
30	903 906 016	6	Lens head screw with Innenskt.
31	907 450 010	1	Stainless steel socket pin with holding magnet
32	903 308 016	1	Serrated bolt
33	901 806 020	2	Cyl.-screw with Innenskt.
34	901 008 020	1	Skt.-screw without shank
35	905 208 025	4	K-disc
36	901 008 040	6	Skt.-screw without shank
37	905 008 000	1	Spring washer
38	905 108 000	12	Washer
39	900 008 002	9	Stop mother
40	901 910 025	2	Carriage bolt
41	901 010 035	2	Skt.-screw without shank
42	901 110 070	2	Skt. Screw with shank
43	901 010 030	1	Skt.-screw without shank
44	901 010 040	1	Skt.-screw without shank
45	905 210 000	3	K-disc
46	905 110 000	8	Washer
47	905 010 000	2	Spring washer
48	900 010 002	5	Stop mother
49	901 212 025	1	Countersunk screw with inner socket.
50	901 012 040	2	Skt.-screw without shank
51	901 912 040	4	carriage bolt
52	901 112 090	2	Skt. Screw with shank
53	901 112 120	3	Skt. Screw with shank
54	905 212 001	10	K-disc
55	905 112 000	11	Washer
56	901 012 020	3	Skt.-screw without shank
57	905 012 000	3	Spring washer
58	900 012 002	11	Stop mother

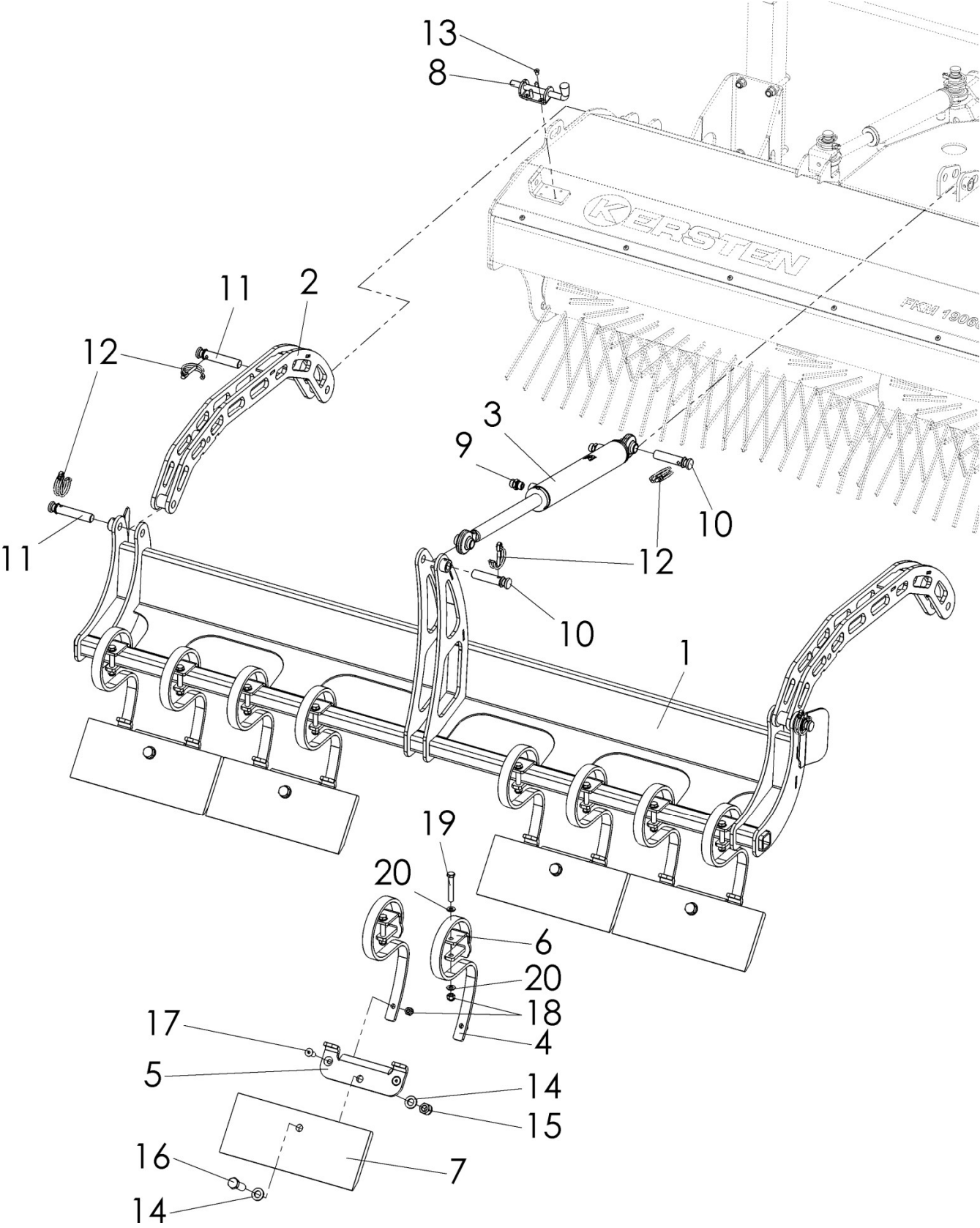
3.4 ASH 7060 L – Scrubbing broom 70 cm Broken Ø, left – C10017 R00



© 2011 F322011

No.	Item No.	Nu.	Designation 1
1	C07228	1	Basic arm compl.
2	C07235	1	Intermediate arm compl.
3	C07241	1	Stop completely
4	C07250	2	Schrau's blue pivot point
5	C07244	1	Swivel arm compl.
6	C07190	1	Locating bolt compl.
7	C07219	3	Rifle
8	C07259	1	Face plate compl.
9	C07261	1	Plate swivel plate compl.
10	C07253	1	engine mount
11	C03832	1	Mounting flange pulled up
12	C06167	2	Collar bushing
13	C07265	1	Top link mount left compl.
14	C07252	1	Counter plate locating bolt
15	C10284	1	Protective rubber
16	C05534	1	Lock washer with countersink
17	941 310 005	1	On a screw handle
18	911 108 030	3	Rubber-metal buffer
19	950 101 060	1	Top link
20	705 200 507	1	Rifle
21	705 193 063	1	Rifle
22	705 200 466	1	Rifle
23	713 000 650	1	Side brush
24	935 102 200	1	Hydraulic motor
25	050 459 020	2	Hose holder
26	900 006 006	2	Retractable sleeve with countersunk head
27	941 200 210	1	Clamping lever
28	910 006 000	3	Grease nipple
29	907 450 010	1	Stainless steel socket pin with holding magnet
30	907 501 108	2	Indexing plungers
31	903 906 016	6	Lens head screw with Innenskt.
32	901 806 020	2	Cyl.-screw with Innenskt.
33	903 308 016	1	Serrated bolt
34	901 008 020	1	Skt.-screw without shank
35	905 208 025	4	K-disc
36	901 008 040	6	Skt.-screw without shank
37	905 008 000	1	Spring washer
38	905 108 000	12	Washer
39	900 008 002	9	Stop mother
40	901 910 025	2	Carriage bolt
41	901 010 035	2	Skt.-screw without shank
42	905 110 000	8	Washer
43	905 210 000	2	K-disc
44	905 010 000	2	Spring washer
45	901 010 030	1	Skt.-screw without shank
46	901 010 040	1	Skt.-screw without shank
47	901 110 070	2	Skt. Screw with shank
48	900 010 002	5	Stop mother
49	901 012 020	3	Skt.-screw without shank
50	901 212 025	1	Countersunk screw with inner socket.
51	901 912 040	4	Carriage bolt
52	901 012 040	2	Skt.-screw without shank
53	901 112 090	2	Skt. Screw with shank
54	901 112 120	3	Skt. Screw with shank
55	905 112 000	11	Washer
56	900 012 002	11	Stop mother
57	905 012 000	3	Spring washer
58	905 212 001	10	K-disc

3.5 Assembling less



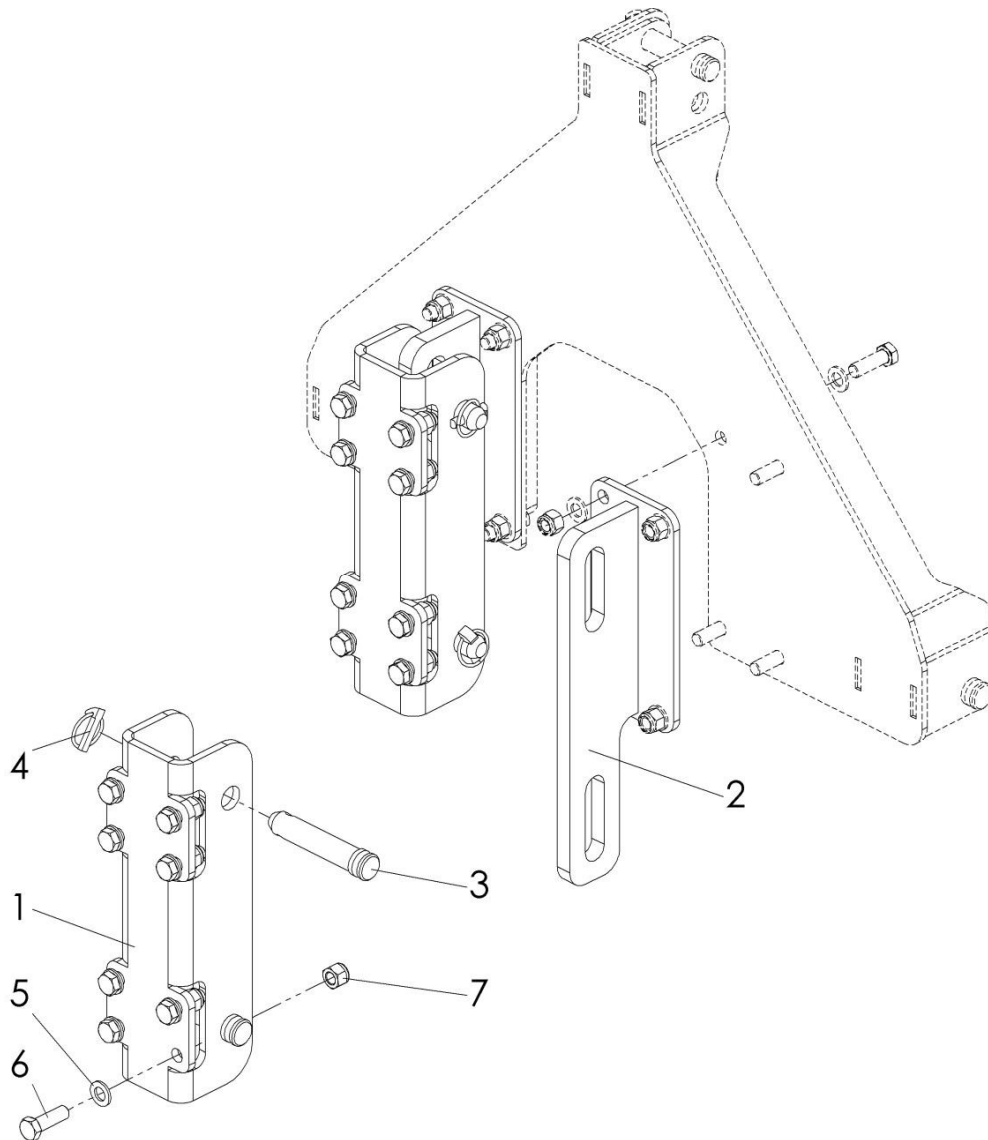
3.5.1 Scraper bar less 13060 – C1 R00

No.	Item No.	Nu.	Designation 1
1	C10	1	Support frame compl.
2	C06760	2	Support arm compl.
3	933 103 006	1	Hydraulic cylinders
4	948 031 032	8	Tines
5	C05888	4	Retaining bracket Hardox rail
6	C10115	8	Spring tine holder
7	C10390	4	Hardox rail
8	907 501 060	2	Bolt sprung
9	931 071 238	2	Hydraulic connection
10	750 000 028	2	Locking pin secured at the top
11	C07128	3	Locking pin secured at the top
12	907 190 550	5	Pipe linch pin
13	901 206 012	8	Countersunk screw with inner socket.
14	905 116 000	8	Washer
15	900 016 002	4	Stop mother
16	901 016 050	4	Skt.-screw without shank
17	901 210 030	8	Countersunk screw with inner-Skt.
18	900 010 002	16	Stop mother
19	901 110 070	8	Skt. Screw with shank
20	905 110 000	16	Washer

3.5.2 Scraper bar less 15060 – C1 R00

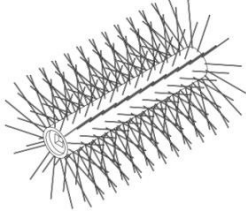
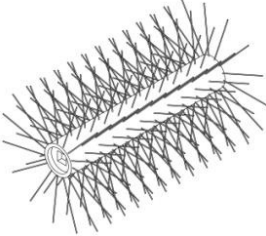
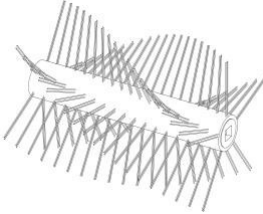
No.	Item No.	Nu.	Designation 1
1	C10	1	Support frame compl.
2	C06760	2	Support arm compl.
3	933 103 006	1	Hydraulic cylinders
4	948 031 032	10	Tines
5	C05888	5	Retaining bracket Hardox rail
6	C10115	10	Spring tine holder
7	C10390	5	Hardoxschiene
8	907 501 060	2	Bolt sprung
9	931 071 238	2	Hydraulikverschraubung
10	750 000 028	2	Locking pin secured at the top
11	C07128	3	Locking pin secured at the top
12	907 190 550	5	Pipe linch pin
13	901 206 012	8	Countersunk screw with inner socket.
14	905 116 000	10	Washer
15	900 016 002	5	Stop mother
16	901 016 050	5	Skt.-screw without shank
17	901 210 030	10	Countersunk screw with inner-Skt.
18	900 010 002	20	Stop mother
19	901 110 070	10	Skt. Screw with shank
20	905 110 000	20	Washer

4 Suspension compensation FKM Ø60 heavy duty – C10128 R00



No.	Item No.	Nu.	Designation 1
1	C10127	2	U-profile heavy
2	C10131	2	Suspension compl.
3	907 428 116	4	Steckbolzen
4	907 111 000	4	Linch pin
5	901 016 050	16	Skt.-screw without shank
6	905 116 000	31	Washer
7	900 016 002	16	Stop mother

5 Sweeping rollers 70 cm roller diameter

	130 cm working with	150 cm working with
Dirt roller with Poly-fullBesatz 	130 616 060	150 616 060
Dirt roller Poly- corrugated wire trimming 	130 616 560	150 616 560
Combination roller with 5-row Poly-twist trim 	130 610 060	150 610 060

Kersten

SITE MAINTENANCE EQUIPMENT

Distributed in UK by
Kersten (UK) Ltd Tel. 0118 986 9253

Progress House
39 Boulton Road Reading, RG2 0NH
www.kerstenuk.com - info@kerstenuk.com