

Kersten

SITE MAINTENANCE EQUIPMENT

Spare Parts Lists Sweeper KM 52



**HFKM 1505,
HFKM 1905,
HFKM 2255,**

**150 cm working width
190 cm working width
225 cm working width**



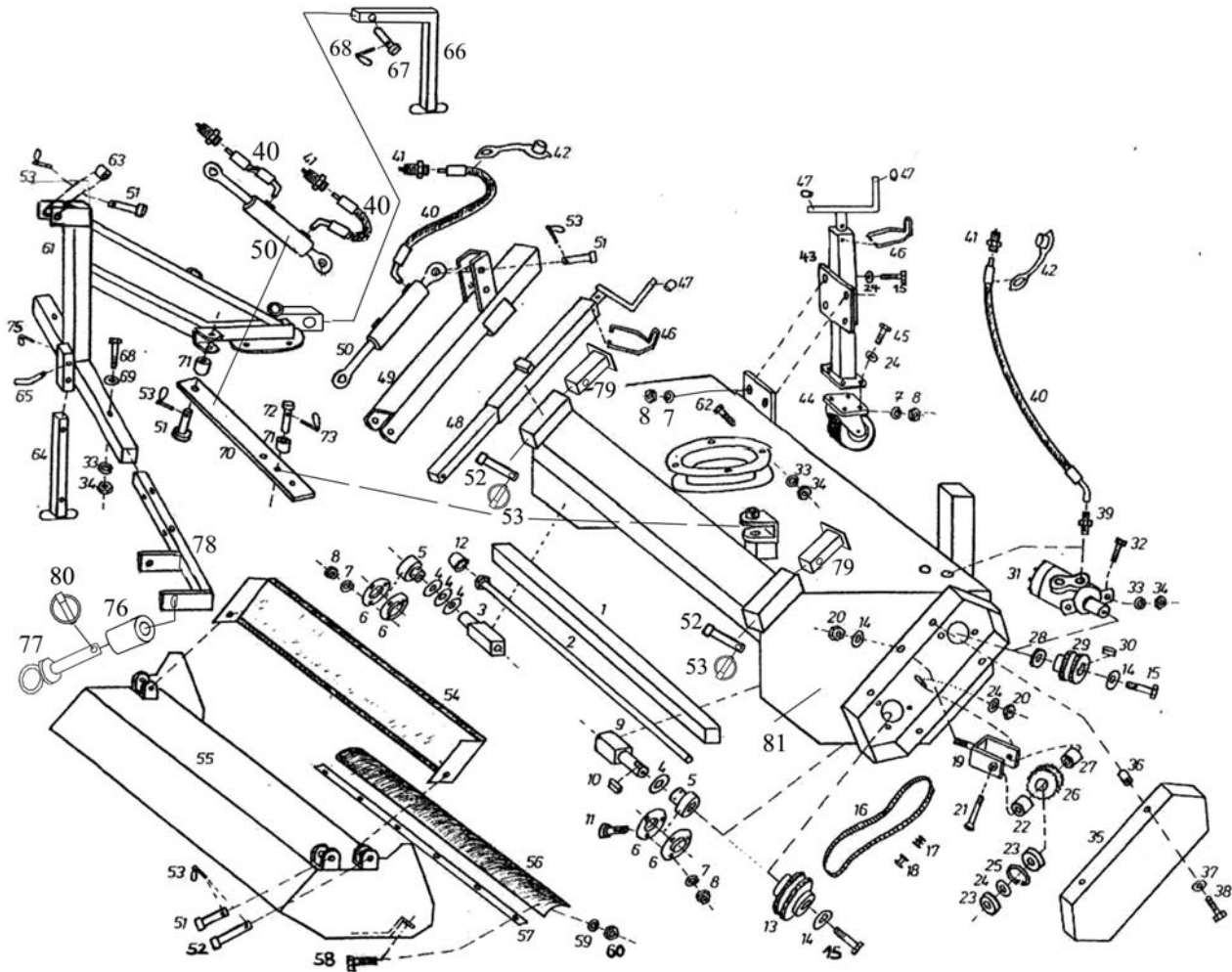
Manufactures by
Kersten Arealmaschinen GmbH
Empeler Straße 95
D - 46459 Rees
www.kersten-maschinen.de



Distributed in UK by
Kersten (UK) Ltd Tel. 0118 986 9253
Progres House 39 Boulton Road
Reading, RG2 0NH
www.kerstenuk.com - info@kerstenuk.com

Roller diameter 52 cm, rear and front attachment

- 1 **Basic unit**
- 2 **Side brushes with one or two control valves**
- 3 **Jockey wheel basic housing, support wheel sump**
- 4 **Shaft drive**
- 5 **Three-way stopcock for HFKM with sump and side brush**
- 6 **Sweeping rollers**



Hydraulic swinging (optional):
 Item 70 and Item 71 are omitted and are replaced by Item 50 and 2x
 Item 40, 2x Item 41, 2x Item 42

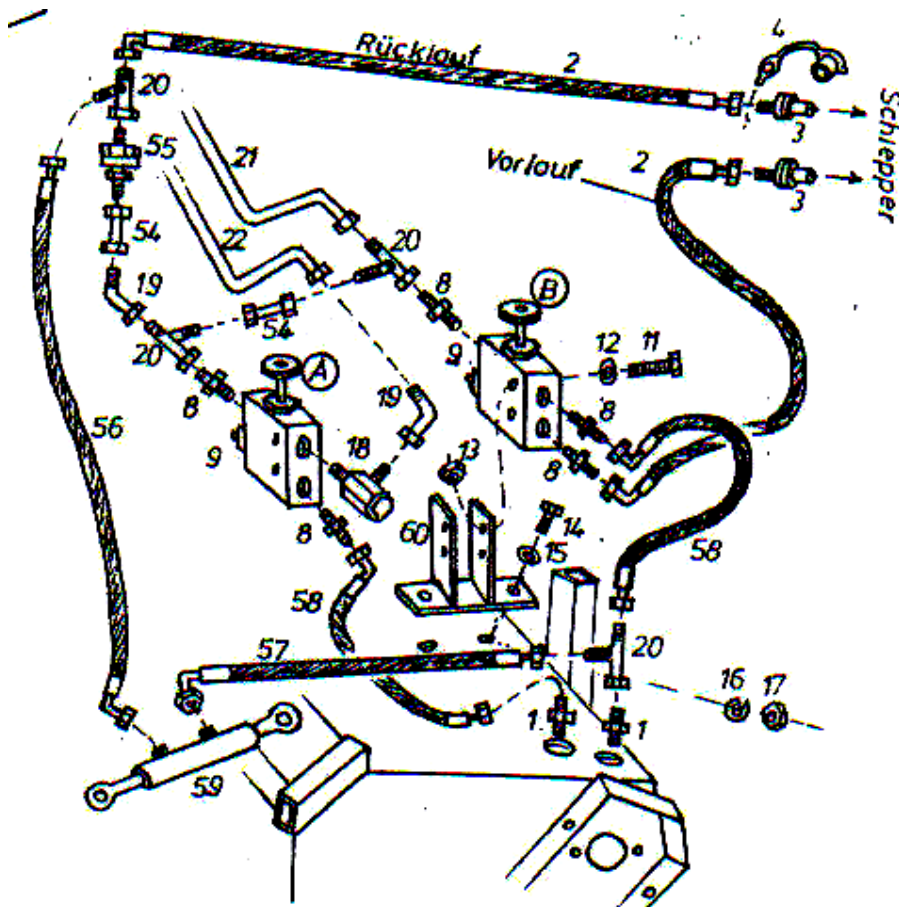
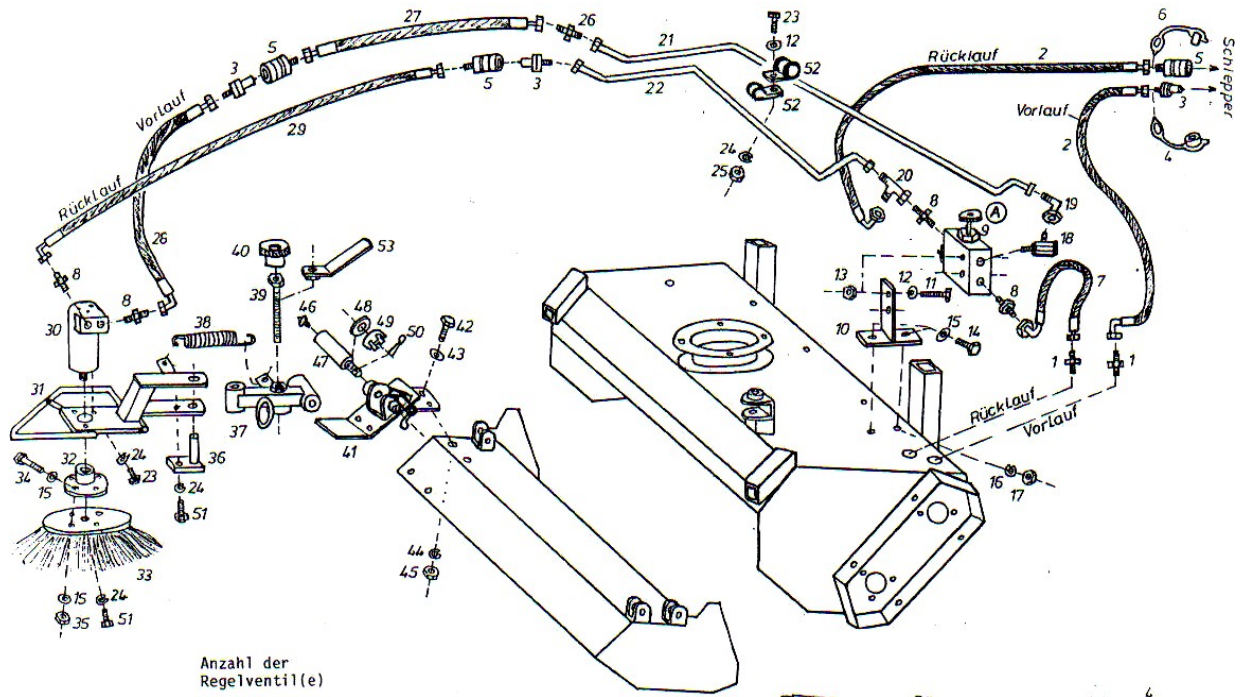
1. Basic unit HFKM 1505, HFKM 1905, HFKM 2255

Date: 17.09.08

No.	Order no.	Nu	Description	No.	Order no.	Nu	Description
1a	150 000 360	1	Drive tube 1505	45	901 110 020	8	Screw
1b	190 000 360		Drive tube 1905	46	942 003 002	4	Clamp
1c	225 000 360		Drive tube 2255	47	942 003 003	4	Rubber stopper
2a	150 000 355	1	Tension rod 1905	48	942 004 000	2	Height adjustment
2b	190 000 355	1	Tension rod 1905	49	155 000 006	1	Holder for hydraulic drainage
2c	225 000 355		Tension rod 2255	50	933 101 180	1	Hydraulic cylinders
3	130 000 351	1	Drive stub, right	51	907 400 073	4	Upper link pin, short
4	705 631 305	4	Disc	52	907 400 074	2	Upper link pin, long
5	924 100 207	2	Camp	53	907 110 000	6	Linch pin
6	924 200 207	4	Bearing shell	54a	150 000 029	1	Splash guard 1505
7	905 010 000	22	Spring washer	54b	195 000 002	1	Splash guard 1905
8	900 010 001	22	Mother	54c	255 000 002		Splash guard 2255
9	130 000 346	1	Drive stub, left	55a	150 000 003	1	Collecting tank 1505
10	908 181 030	1	Adjusting spring	55b	190 000 003	1	Collecting container 1905
11	901 910 020	3	Carriage bolt	55c	255 000 003	1	Collecting container 2255
12	943 559 016	1	Cap	56a	150 000 004	1	Rubber cloth 1505
13	920 402 326	1	Sprocket, below	56b	190 000 004	1	Rubber flaps 1905
14	905 210 000	3	diameter washer	56c	255 000 004	1	Rubber flaps 2255
15	901 110 025	10	Screw	57a	150 000 030	1	Mounting strip 1505
16	920 101 930	1	Duplex chain	57b	190 000 005	1	Fixing strip 1905
17	920 201 000	1	Half chain link	57c	225 000 005	1	Fastening strip 2255
18	920 301 000	1	Chain lock	58	901 106 016	6	Screw
19	C05410	1	Headband	59	905 006 000	6	Spring washer
20	900 010 002	2	Stop mother	60	900 006 001	6	Mother
21	901 210 070	1	Lowering screw	61	155 000 010	1	Mounting frame cat 1-3
22	705 205 095	1	Bushing, narrow	62	901 112 025	4	Screw
23	924 106 200	2	Camp	63	907 400 353	1	Compensating bush
24	905 110 000	18	Washer	64	155 000 011	1	Parking support
25	906 000 390	1	Seeger ring	65	155 000 013	1	Mounting lever
26	920 402 215	1	Sprocket	66a	155 411 012	1	Parking support at
27	705 205 015	1	Bush, wide	66b	155 411 011	1	Front attachment without container
28	705 407 508	1	Shell	67	155 000 013	1	Parking support with front attachment with
29	920 402 114	1	Sprocket, above	70	155 000 015	1	container
30	908 008 732	1	Adjusting spring	71	705 305 035	2	Bolt
31	935 102 100	1	Hydraulic motor	72	750 000 028	1	Manual adjustment for pivoting
32	901 112 030	2	Screw	73	907 108 000	1	Rifle
33	905 012 000	10	Spring washer	75	907 111 000	1	Bolt
34	900 012 001	10	Sother	76	907 400 128	1	Linch pin
35	130 000 165	1	Cover	77	800 120 022	1	Folding plug 11er
36	900 006 004	4	Rivet nut	78	155 000 014	1	Rifle
37	905 206 000	4	Diameter washer	79	942 003 005	2	Ringbolt
38	901 106 016	4	Screw	80	907 111 000	1	sidearm
39	931 071 212	2	Hydraulic	81a	150 000 007	1	(2 tabs) from 08.05
40	930 000 025	3	Gland	81b	190 000 011	1	Mount for splash guard (without container)
41	932 161 323	4	Hydraulic hose	81c	225 000 011	1	Lynch pin
42	932 391 032	2	Hydraulic connector				
43	C10802	2	Dust cap				
44	926 304 200	2	Stuz foot (old 942 003 411)				

2. Side brush with one or two control valves

Date: 07.06



2. Side brush with one or two control valves

Date: 07.06

No.	Order no.	Nu	Description
1	931 071 212	2	Hydraulic fitting
2	930 000 025	2	Hydraulic hose
3	932 161 323	3/4	Hydraulic connector
4	932 391 032	1/2	Dust cap
5	932 231 223	3	Hydraulic sleeve
5a	937 300 028	3	Seal kit f. sleeve
6	932 392 022	1	Dust cap
7	930 000 002	2	Hydraulic hose
8	931 071 238	4/7	Hydraulic screwed
9	936 201 000	1/2	Control valve
9a	936 202 075	1	Control cartridge
10	155 000 020	1/0	Holder for control valve
11	901 106 045	2/4	Screw
12	905 106 000	6/8	Flat washer disk
13	900 006 002	2/4	Mother
14	901 008 020	2	Screw
15	905 108 000	10	Washer
16	905 008 000	2	Spring washer
17	900 008 001	2	Mother
18	931 111 238	1	Hydraulic fitting
19	931 061 200	1/2	Hydraulic fitting
20	931 041 200	1/4	Hydraulic fitting
21a	155 150 021	1	Hydraulic line - flow 1505
21b	155 190 021	1	Hydraulic line - supply 1905
21c	155 255 021	1	Hydraulic line - supply 2255
22a	155 150 022	1	Hydraulic line - return 1505
22a	155 190 022	1	Hydraulic line - return 1905
22b	155 255 022	1	Hydraulic line - return 2255
23	901 006 020	7	Screw
24	905 006 000	9	Spring washer
25	900 006 001	4	Mother
26	931 091 200	1	Hydraulic fitting
27	930 000 050	1	Hydraulic hose
28	930 001 004	1	Hydraulic hose
29	930 0000 053	1	Hydraulic hose
30	935 111 032	1	Hydraulic motor
30a	937 301 032	1	Gasket set for engine

No.	Order no.	Nu	Description
31	127 000 745	1	Front side brush arm
32	155 000 025	1	Small broom sides
33a	105 750 500	1	Side brush, hard, 500 Ø
33b	105 775 500	1	Side brush, mixed
34	901 108 040	4	Screw
35	900 008 002	4	Mother
36	155 000 026	1	Arm holder
37	130 000 760	1	Adjusting piece
38	909 200 155	1	Mainspring
39	155 000 023	1	Spindle
40	941 410 031	1	Handwheel, complete
41	155 000 024	1	Connecting plate
42	901 010 025	4	Screw
43	905 110 000	4	Flat washer disk
44	905 010 000	4	Spring washer
45	900 010 001	4	Mother
46	910 010 000	1	Grease nipple
	47 bis 49 =		Bundle screw, 3-piece
	903 220 015	1	Collar screw
47		1	Disc
48	950 120 000	1	Cotter
50	907 250 040	1	Screw
51	901 006 020	2	Rubber pipe clamp
52	908 612 015	8	Rotary lever for spindle
53	155 000 027	1	Two control valves:
	54 – 60 just	at	Pipe nipple 12L, 40mm
54	705 120 040	2	Check valve
55	931 231 200	1	Hydraulic hose
56	930 001 004	1	Hydraulic hose
57	930 000 064	1	Hydraulic hose
58	930 000 001	2	Hydraulic cylinders
59	933 101 180	1	Holder for 2 control valves
60	156 000 020	1	Front side brush arm

Control valve A = Setting for side brush speed
Control valve B = setting for sweeping roller speed

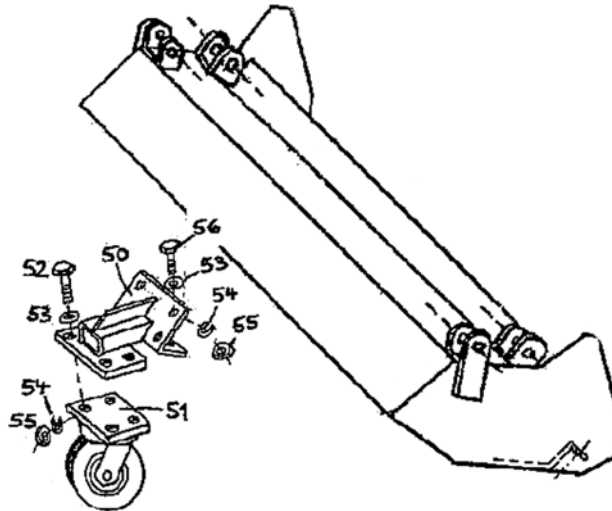
Check valve - can only be used with a double-acting control valve on the tractor!

3. Impeller on the dirt collector

Date: 20.12.06

HFKM1505 and HFKM 1905: One impeller on the dirt collector

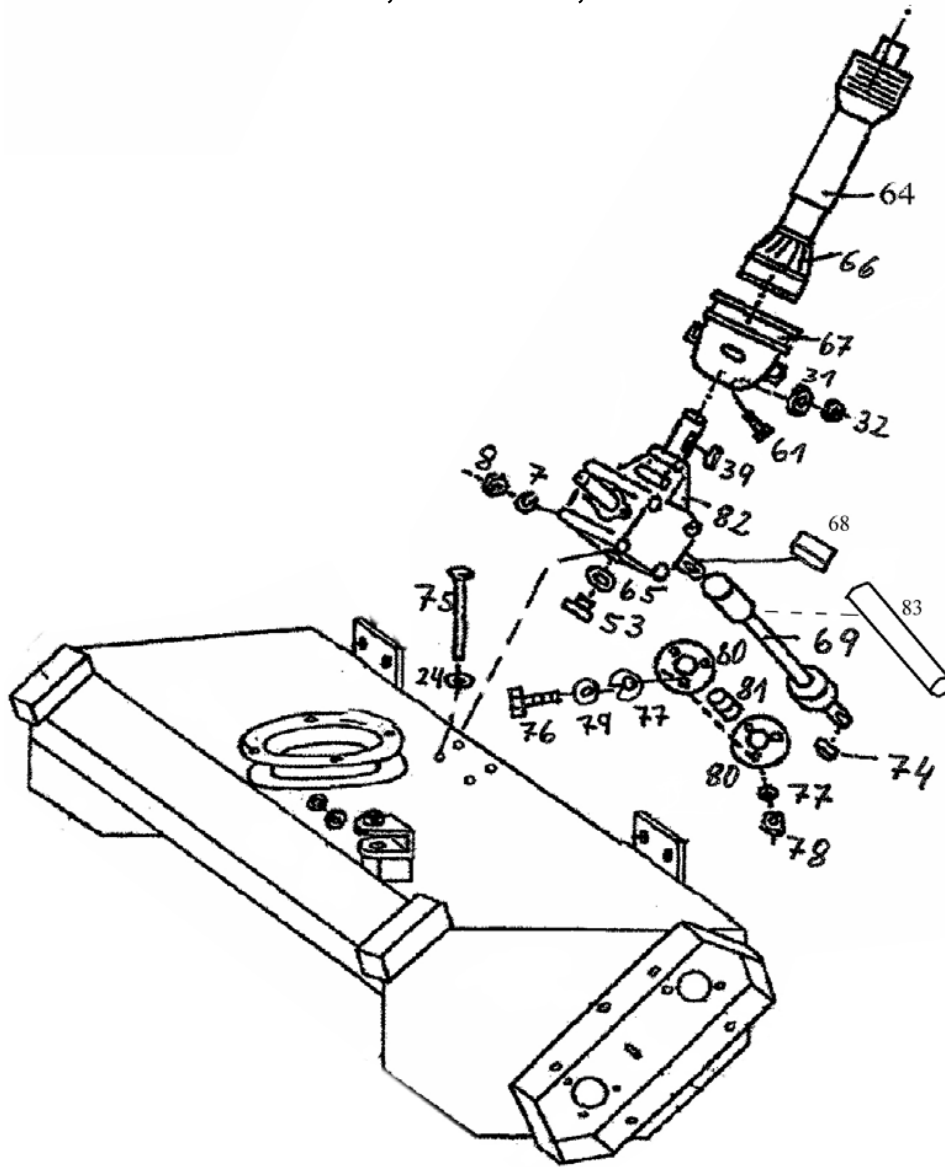
HFKKM 2255: Two impellers on the dirt collector



No.	Order no.	Nu	Description
50	225 000 110	1	Wheel holder
51	926 304 200	1/2	Impeller 200 mm Ø
52	901 010 020	4	Screw
53	905 110 000	10	Washer
54	905 010 000	10	Spring washer
55	900 010 001	10	Mother
56	901 010 025	6	Screw

4. Cardan shaft drive HFKM 1505, HFKM 1905, HFKM 2255

Date: 07.06

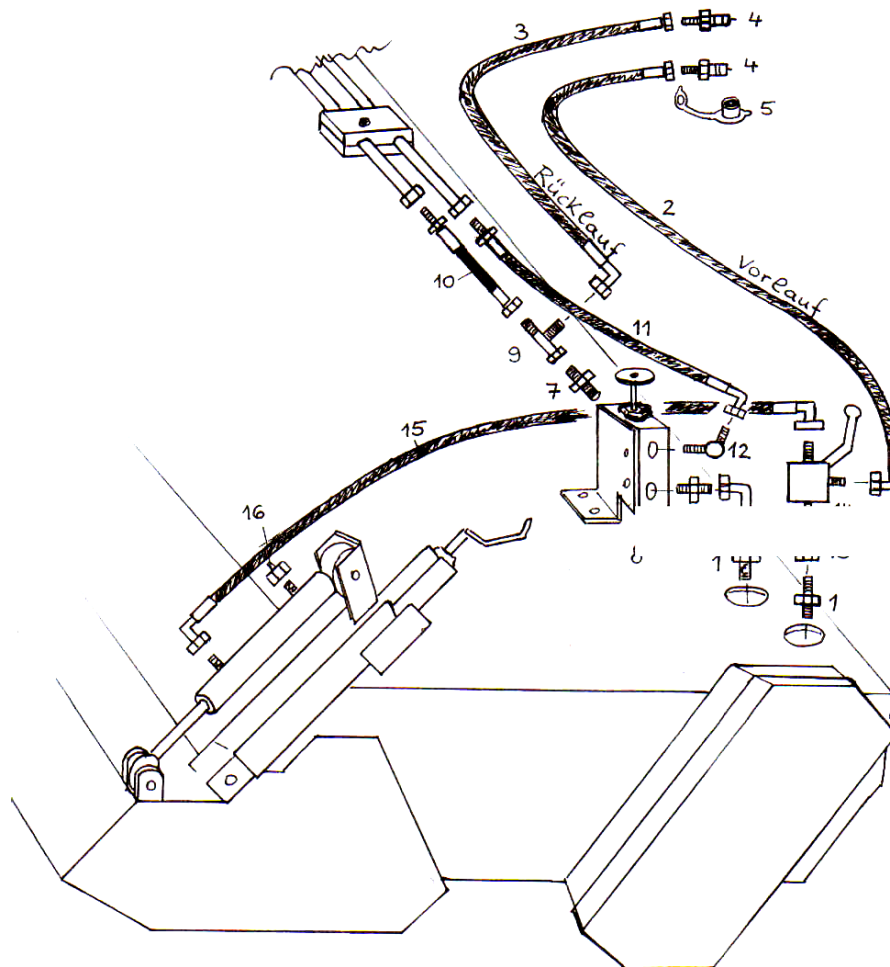


No.	Order no.	Nu	Description	No.	Order no.	Nu	Description
7	905 010 000	4	Spring washer	69b	190 000 100	1	Drive shaft HFKM 1905 Drive shaft HFKM 1255
8	900 010 001	4	Mother				
24	905 110 000	8	Washer	69c	225 000 100	1	Adjusting spring screw
31	905 006 000	4	Washer				
32	900 006 002	4	Stop mother	74	908 008 720	1	Screw
39	908 008 730	1	Adjusting spring	75	901 010 125	4	washer
61	901 006 020	4	Screw	76	901 008 025	3	Mother
64	923 3 -- --0	1	PTO shaft with protection	77	905 008 000	6	Spring washer
				78	900 008 001	3	Bearing shell
				79	905 008 000	3	Camp
65	937 120 025	1	Sealing ring	80	924 200 205	2	Bevel gear
66	923 3-- --1	1	Protection completely	81	924 100 205	1	Protective tube 1500
67	923 003 001	1	Protective pot on the gearbox	82	922 101 001	1	Protective tube 1900
				83a	150 000 105	1	Protective tube 2250
68	908 008 725	1	Adjusting spring	83b	190 000 105	1	Drive shaft HFKM 1905
69a	150 000 100	1	Drive shaft HFKM 1505	83c	225 000 105	1	Drive shaft HFKM 1255

**5. Three-way cock for HFKM 1505, HFKM 1905, HFKM 2255
with collecting container and side brush**





Date: 07.06

In a tractor with a single-acting control valve, a three-way cock can be installed to switch over the



Hydraulic tank emptying:

No.	Order no.	Nu	Description	No.	Order no.	Nu	Description
1	931 071 212	2	Hydraulic fitting	9	931 041 200	1	Hydraulic fitting
2	930 000 ...	1	Flow hose *	10	930 155 300	1	Hose 300lg, CEL / DKL
3	930 000 ...	1	Return hose *	11	930 155 380	1	Hose 380 CEL / DKL90
4	932 161 323	2	Hydro plug	12	931 111 238	1	Hydro screw connection
5	932 391 032	2	dust cap	13	705 012 041	1	Pipe nipple 12L, 41lg
6	050 362 112	1	Pipe bend 90°	14	931 141 218	1	Three-way valve
7	931 071 238	2	Hydro screw connection	15	930 155 900	1	Hose 900lg 2xDKL90
8	936 201 000	1	Control valve	16	931 200 012	1	Vent plug 12L
	* = necessarily tractor type!						

Photo	Description Order no.								
	<p><u>Dirt broom</u> with poly full trimming</p> <p>Working width:</p> <table data-bbox="454 526 1013 672"> <tr> <td>150 cm</td> <td>150 516 052</td> </tr> <tr> <td>165 cm</td> <td>165 516 052</td> </tr> <tr> <td>190 cm</td> <td>190 516 052</td> </tr> <tr> <td>225 cm</td> <td>225 516 052</td> </tr> </table>	150 cm	150 516 052	165 cm	165 516 052	190 cm	190 516 052	225 cm	225 516 052
150 cm	150 516 052								
165 cm	165 516 052								
190 cm	190 516 052								
225 cm	225 516 052								
	<p><u>Dirt roller - mixed</u> with poly / corrugated wire trimming (50% each)</p> <p>Working width:</p> <table data-bbox="454 869 1034 1014"> <tr> <td>150 cm</td> <td>150 516 552</td> </tr> <tr> <td>165 cm</td> <td>165 016 552</td> </tr> <tr> <td>190 cm</td> <td>190 016 552</td> </tr> <tr> <td>225 cm</td> <td>225 016 552</td> </tr> </table>	150 cm	150 516 552	165 cm	165 016 552	190 cm	190 016 552	225 cm	225 016 552
150 cm	150 516 552								
165 cm	165 016 552								
190 cm	190 016 552								
225 cm	225 016 552								
	<p><u>Combination broom</u> with 5-row polly twist trim</p> <p>Working width:</p> <table data-bbox="454 1243 1029 1388"> <tr> <td>150 cm</td> <td>150 510 052</td> </tr> <tr> <td>165 cm</td> <td>165 510 052</td> </tr> <tr> <td>190 cm</td> <td>190 010 052</td> </tr> <tr> <td>225 cm</td> <td>225 010 052</td> </tr> </table>	150 cm	150 510 052	165 cm	165 510 052	190 cm	190 010 052	225 cm	225 010 052
150 cm	150 510 052								
165 cm	165 510 052								
190 cm	190 010 052								
225 cm	225 010 052								
	<p><u>Snow broom</u> with 4-row poly-twist trim</p> <p>Working width:</p> <table data-bbox="454 1585 1034 1731"> <tr> <td>150 cm</td> <td>150 508 052</td> </tr> <tr> <td>165 cm</td> <td>165 508 052</td> </tr> <tr> <td>190 cm</td> <td>190 508 052</td> </tr> <tr> <td>225 cm</td> <td>225 508 052</td> </tr> </table>	150 cm	150 508 052	165 cm	165 508 052	190 cm	190 508 052	225 cm	225 508 052
150 cm	150 508 052								
165 cm	165 508 052								
190 cm	190 508 052								
225 cm	225 508 052								

Kersten

SITE MAINTENANCE EQUIPMENT

Distributed in UK by
Kersten (UK) Ltd Tel. 0118 986 9253

Progress House
39 Boulton Road Reading, RG2 0NH
www.kerstenuk.com - info@kerstenuk.com