

## DrivePro LD Snow Plough

For pickups and 4x4's

**M26800** Powered Angling Plough—2 meters



- This is our lighter duty contracting plough for smaller pickups. Ideal for clearing car parks and internal roads.
- They sport slot and tab construction techniques, which allow us to significantly reduce the weight of the plough to keep it in line with Manufacturer front axel weights.
- The Plough comes with an electro hydraulic system, allowing it to be powered from the vehicle battery. Hydraulic angling and lift can be controlled with the touch of a button from the cab of your vehicle, for precise placement of snow.
- The severe attack angle of the plough allows it to clear snow quickly and easily, and the snow is able to roll off the blade smoothly .
- All Meyer carbon steel moldboards are painted with Meyer Dura-Slick™ Paint. This automotive-style paint with Teflon® is baked on to the steel for durability and better snow-rolling action. It's the reason why Meyer plows throw snow farther and move it faster than the competition.
- Two heavy duty trip springs absorb impact from hitting the snow and protect the plough and vehicle when running over obstacles such as speed bumps.
- The Quick –Link 2" receiver system makes the plough extremely fast and simple to connect to the vehicle, with just one pin and one plug.
- Brackets are available for a wide range of pickups and 4x4's.
- Castor wheels allow the plough to be stored and moved easily when it is off the vehicle

For more info



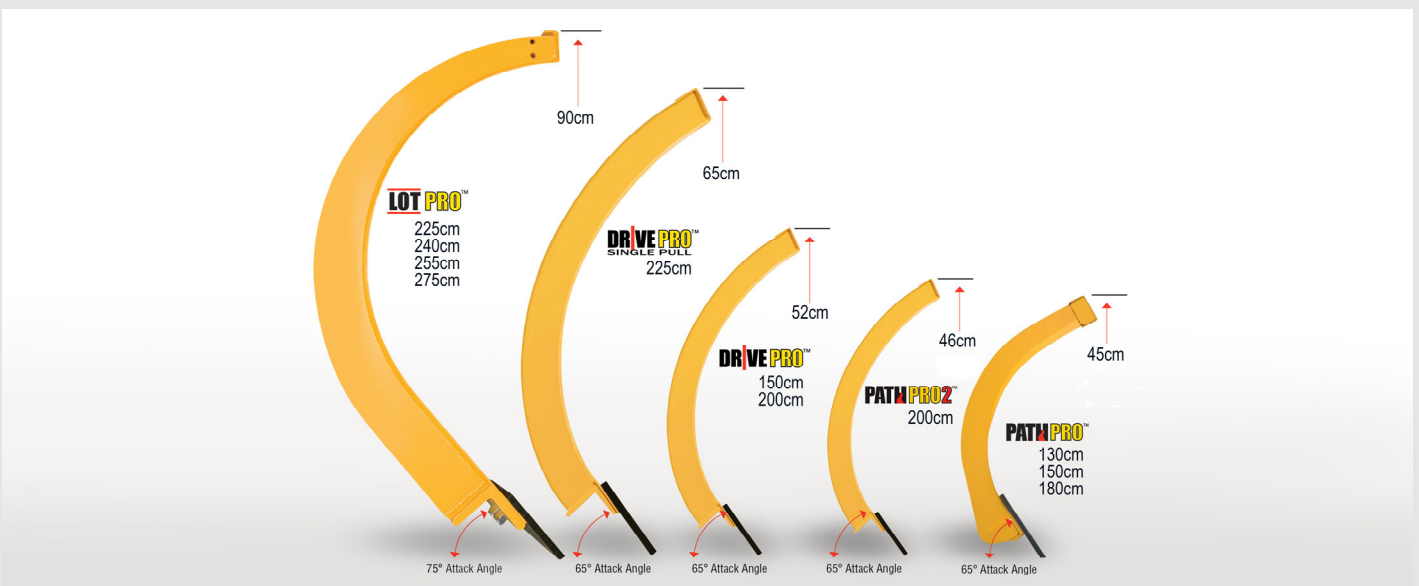
# HYDRAULIC ANGLING

## DrivePro LD Snow Plough

<b>Working width</b>	203cm (Straight)	180cm (Angled)
<b>Weight</b>	127kg	
<b>Angle of Attack</b>	65°	
<b>Blade Depth</b>	52cm	
<b>Warranty</b>	1 Year	

### Optional Accessories

<b>1</b> Urethane Cutting edge Kit	M08277
<b>2</b> Moulded Snow Deflector	M13071
<b>3</b> Headlamp Kit	M07680
<b>4</b> Additional Wiring Harness	M22691
<b>5</b> Replaceable Gravel Shoe Kit	M08271





### 1 Urethane Edge

The DrivePro LD comes with a Steel edge for cutting into ice. However, many customers prefer to use softer edges to protect the street furniture, such as cat's eyes or man hole covers. Urethane is a rubber like material with much better wear properties, which give it a longer life. For additional life, the Urethane edge is adjustable and also usable on both sides.

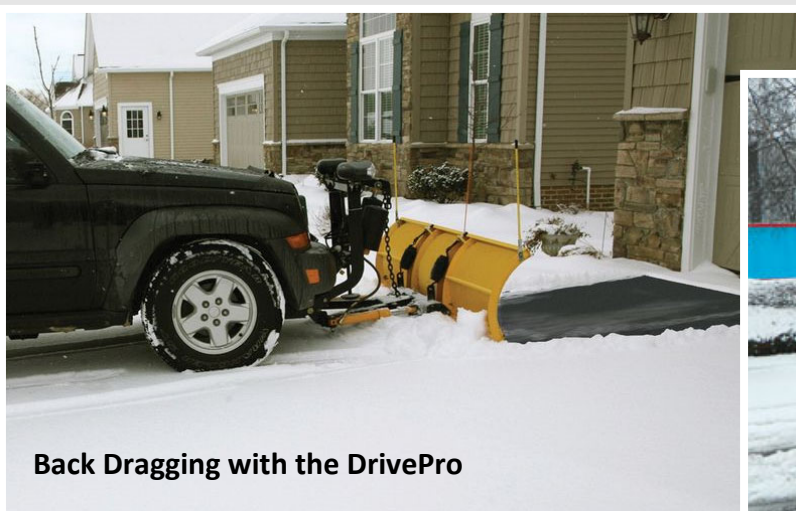


### 2 Moulded Snow Deflector

When the snow gets deep, it is very easy to fling snow over the top of the plough and onto the windscreen as it builds up on the blade. The Moulded deflector prevents this from happening and channels the snow, so that it rolls nicely off the sides of the blade. This allows you to drive faster when ploughing and keeps your windscreen clear.

### 3 Headlamp Kit

The DrivePro LD can be fitted with a headlamp kit. In the UK it is illegal to drive with a Plough on the road without a kit like this, the reason is that the original car headlights can reflect off the plough and make it difficult for the driver to see. These lights replace your light setup, but further forward, so the beam is in front of the Plough. That way the driver can see the road in front of the plough without a problem, The Nightsaber headlamps are CE Marked, and help the plough to be compliant with UK road laws. The Lights are hardwired into the vehicle, so they completely replace the functions of your vehicle headlamps, with high/low beam and indicating bulbs.





#### 4 Additional Wiring Harness

Provided a 2" receiver is also fitted to both vehicles, this allows a second vehicle to share the same plough. The plough can be removed from the main vehicle with one pin and one plug and put straight on the second vehicle in the same way. Ploughing is a job which requires a working vehicle in harsh conditions, so having a back up can be a good idea to avoid downtime waiting for repairs. Other times two drivers might be on a rota, and this allows them to share the same plough on different shifts.

#### 5 Replaceable Gravel Shoe Kit

Shoes are mounted on the back of the blade, (a.k.a., moldboard) and allow the operator to create a space/gap between the cutting edge and ground. The shoes actually engage the surface as opposed to the cutting edge. This space/gap is sometimes needed depending on the surface being ploughed. Gravel roads, pavers, and/or special decorative driveways are examples where shoes may be utilized.







The unique Quick-Attach50 mounting system features a robust bracket that attaches to the chassis at the front of the vehicle (see left) using existing mounting points. The bracket is usually located elegantly under and rear of the front bumper with the female socket sealed with a durable/removable plastic cover.

This mounting may also be used in conjunction with the front 50mm ball hitch assembly for manoeuvring trailers in restricted areas and mounting a front Quick-Attach winch.

## Mounting options for the Meyer DrivePro LD

The Meyer DrivePro LD is fitted to a bespoke heavy duty front towbar bracket. The plough mounting system features a robust bracket that attaches to the chassis at the front of the vehicle using existing mounting points. The bracket is usually located elegantly under and rear of the front bumper (see left) with the female socket sealed with a durable/removable plastic cover when the plough is not in use.

This front mounting may be used in conjunction with the front 50mm ball hitch assembly for accurately manoeuvring trailers in restricted areas and mounting a front quick-attach winch. It can also be used for front mounting a Meyer spreader and many other applications. A list of the current models can be found below, but please get in touch if your vehicle is not listed as we are adding vehicles all the time.

CODE	DESCRIPTION
	Vehicle Mounting Bracket with <i>Quick-Attach50</i> 2" receiver hitch system
M18533	Dacia Duster 2012 on - ( <i>PathPro2</i> Only)
M18528	Citroen Relay, Fiat Ducato Peugeot Jumper
M18537	Fiat Fullback 2016 on
M18501	Ford Ranger/Mazda B2500 to 2011
M18590	Ford Ranger XL 2012 on
M18505	Ford Transit Van/Chassis Cab to 2014
M18535	Ford Transit Van/Chassis Cab 2014 on
M18591	Ford Transit Custom 2014 on
M18504	Isuzu D-Max/Canyon/Chevy Colorado to 2012
M18513	Isuzu D-Max/Canyon/Chevy Colorado 2012 on
M18519	Jeep Wrangler 2 and 4 door 2007 on
M18502	Land Rover Defender 90/100 1983 on
M18526	Land Rover Discovery II 1998 - 2005
M18524	Land Rover Discovery 3 and 4 2005 on
M18520	Mercedes Sprinter-VW Crafter 2006 on
M18522	Mercedes Sprinter 4x4 2006 on
M18508	Mitsubishi L200 2006 -2015
M18516	Mitsubishi L200 to 2006
M18534	Mitsubishi L200 Mid 2015 on
M18509	Nissan Navara D22 pre 2005,
M18507	Nissan Navara 2005-2016
M18536	Nissan Navara 2016
M18525	Suzuki Jimny 1998 (call for model type - <i>PathPro2</i> Only)
M18523	Tata Telcoline 2.0 Tdi 4x4
M18512	Toyota HiLux 1998-2005,
M18503	Toyota HiLux Mk 6 2005 on
M18521	Toyota LandCruiser 1995 to 2002
M18518	Toyota LandCruiser 2003 to 2009
M18517	Volkswagen Amarok 2011 on For all other applications please enquire.