

# ELECTRIC WEED CONTROL KERSTEN ELECTRIC LANCE 2025



Prices are subject to change and are recommended retail prices without VAT.  
When ordering, please seek a formal quotation from Kersten UK or an authorised Kersten Dealer.



Page	Contents
P.2	Contents
P.3	Principle of Electric Weed Control
P.4 - 5	Kersten Electric Lance - Selective electric weeding device

## Kersten Integrated Weed Management Solutions

### Weed Prevention SWEEPERS

Kersten sweepers have been designed specifically for effective removal of detritus on hard surfaces. The 5 row spiral brushes are configured to effectively move bulky, heavy material such as soil, allowing your hard surfaces to stay clean and dry out more quickly to prevent moss from taking hold.

Kersten sweepers can be fitted with collection boxes and gully brushes to make collection of material easy, even right up to a kerb edge.



### Weed Control Hot Water Weed Control

Hot water weeders deliver boiling water directly to the base of weeds, effectively killing both the plants and their root systems. This method not only targets young, fleshy weeds but also sanitizes the soil, reducing the chance of future growth. By rapidly heating the plant tissues and penetrating the soil, hot water weeders ensure thorough treatment, promoting healthier garden ecosystems.



### Weed Control Hot Air Weed Control

Hot air weeders employ a concentrated stream of hot air to eliminate weeds without harming surrounding plants. They are particularly effective on young, fleshy plants, which lack the energy reserves of older, established species. By raising the temperature of the weeds, hot air disrupts their cellular structure, leading to rapid and effective removal. Ideal for flower beds, gardens, and pathways, these tools allow for precise targeting.



### Weed Control Electric Weed Control

Weeding with electricity, is a fast, economical and extremely effective method of weeding. We offer a full range of products, from hand held, and walk behind, through to tractor and side arm mounted machines, ensuring the right products for a wide variety of applications. Weeds will wilt almost immediately and will dry off within 3-4 days. Because the treatment is systemic, there is far less regrowth than with other thermal methods, resulting in fewer applications per year for perennial plants.



# The principle

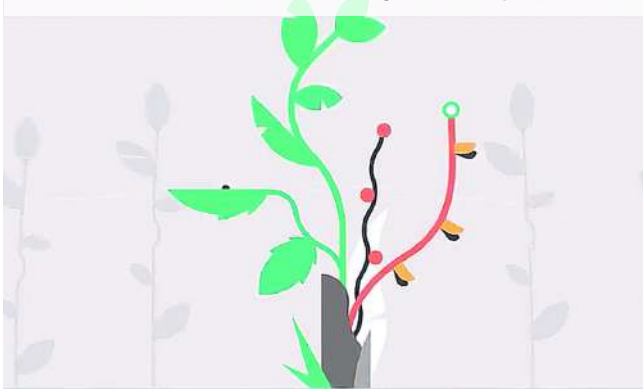
The **electric** weeding system operates on electrophysical principles. The device generates a very high current pulse, thereby eliminating unwanted plants in a targeted manner. The power module generates the necessary high voltage, transferring it through a positive electrode into the plant. The electricity follows the easiest path to the ground electrode. Since weeds are water-rich, they act as a conductive pathway. The energy heats and boils the water inside the plant, rupturing its cells and breaking down its structure, effectively killing the weed.

The result:

- The plant's chlorophyll is immediately damaged, the cells are irreversibly destroyed and die
- The water supply to the cells is interrupted
- The plant dries out

The right amount of energy and optimized ground contact are decisive for the effect: Plants with a high water content compared to their leaf mass, with few stems and roots, require little energy and are easy to treat. Very dense and woody wild herbs or very large plants require a lot of energy. In these cases, the method may combine remediation action to achieve the best results, as the young new shoots carry a particularly large amount of water and therefore direct the flow more successful into the plant. Plants with larger rootstocks or rhizomes are severely weakened and sometimes have to be treated several times before they are completely destroyed.

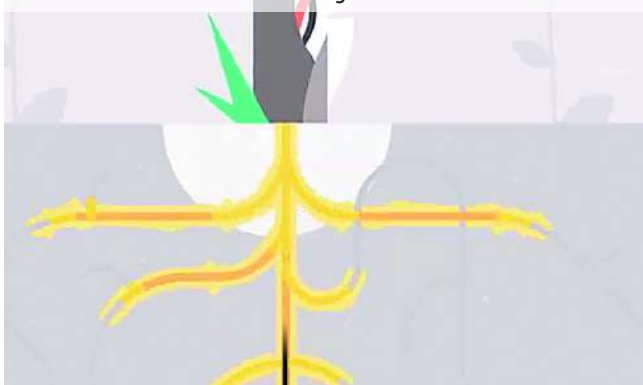
Precise treatment of the targeted weed plant



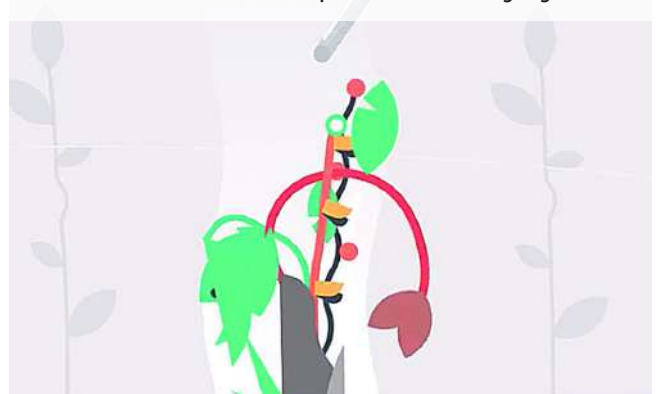
High current flows through the plant, disrupting its internal cellular structure



The current travels through the plant and deep into its roots, then back to the ground electrodes



The root dies and with it the plant, it can no longer grow back





# Kersten Electric Lance

Selective electric weeding device



Model	KEW
Type	Pedestrian Electric Weeding Lance
Lance with handle length [cm]	170 cm
Treatment cable[m]	20 m
Connecting cable[m]	7 m
Dimension of power module (L X W X H)	1867 x 400 x 330 mm
Coverage Area	1867 x 400 x 330 mm
Power Module Weight	140kg

### Safety first

- The Kersten electric lance system is equipped with a variety of security features:
- Safety circuit continuously checks all electronic components and switches off if necessary or doesn't switch on.
  - Circuit breakers on both earthing plugs confirm a safe earth fault.
  - 2-point operation for safe working.
  - Annual certified application training.
  - Emergency stop function on the lance and on the device.

### Targeted Approach

Kersten Electric Lance delivers high-voltage current through the precise tip of an electric lance. The current flows into the plant upon contact, travelling through its roots and back to a grounding spike. This approach focuses on selective, targeted weed control by treating only what the lance touches, making it ideal for precise applications.

- + Positive electrodes
- Ground electrodes

**Introducing the Kersten Electric Weeding Lance**  
The Kersten Electric Weeding Lance is a revolutionary solution for eliminating weeds using advanced electrophysical technology. This cutting-edge system targets unwanted plants with a high-current pulse, effectively destroying their internal structure.

**How it Works:**  
The device generates a high-voltage current that flows from the lance, through the plant, and into the subsoil. A ground spike completes the circuit, allowing the energy to pass through the weed. This energy boils the water within the plant, causing irreparable damage to its cells and ultimately destroying it.

**Factors Affecting Effectiveness:**  
**Plant Water Content:** Plants with high water content and fewer stems/roots require less energy for effective treatment.  
**Plant Density and Size:** Dense, woody, or large plants may require more energy or combined methods (e.g., mowing followed by treatment of new shoots).  
**Root Systems:** Plants with extensive rootstocks or rhizomes may need multiple treatments for complete destruction.

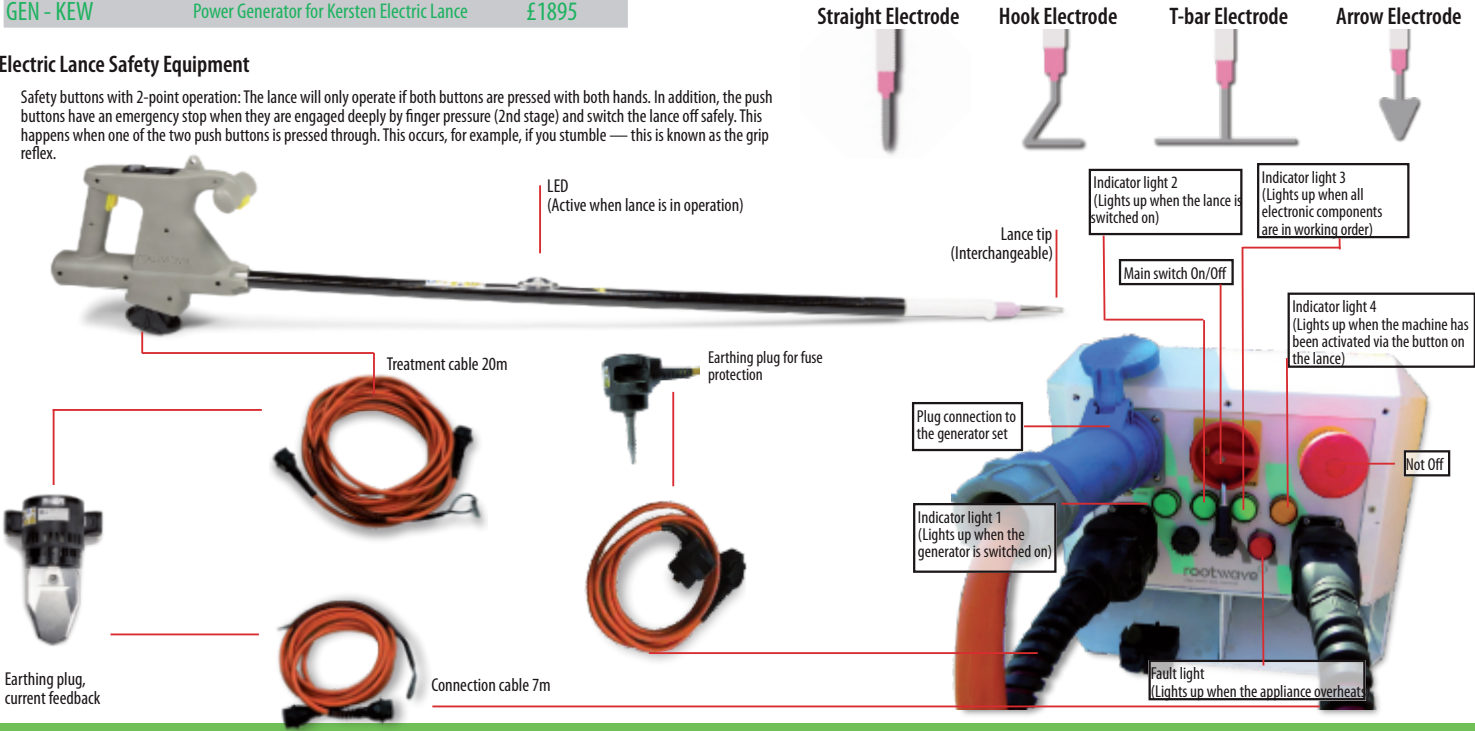
**Benefits of the Kersten Electric Weeding Lance:**  
**Targeted Weed Elimination:** Precisely eliminates unwanted plants without harming surrounding vegetation or soil.  
**Environmentally Friendly:** No chemicals or hazardous residues are involved, making it safe for use near water and sensitive habitats.  
**Efficient and Effective:** Offers a fast and effective way to control invasive species like Japanese Knotweed and Giant Hogweed.

Model Number	Description	Price
K EW001	Electric Weeding Lance	£25,950

Required accessories		
Part Number	Description	Price
K EW002	Safety Boots	£120
GEN - KEW	Power Generator for Kersten Electric Lance	£1895

Optional accessories		
Part Number	Description	Price
U-PRO-MEC041	Pro Treatment Lance Straight Electrode Mk3	£435
U-PRO-MEC053	Pro Treatment Lance Hook Electrode Mk3	£490
U-PRO-MEC056	Pro Treatment Lance T-Bar Electrode Mk3	£465
U-PRO-MEC059	Pro Treatment Lance Arrow Electrode Mk3	£490



## KERSTEN ELECTRIC LANCE IN ACTION





# **Kersten**

**SITE MAINTENANCE EQUIPMENT**

**KERSTEN (UK) LTD  
PROGRESS HOUSE  
39 BOULTON ROAD  
READING  
RG2 0NH**

**0118 986 9253  
INFO@KERSTENUK.COM**

**KERSTENUK.COM**

